
MEASURE A BOND SITE COMMITTEE UPDATE

BRANCIFORTE MIDDLE SCHOOL

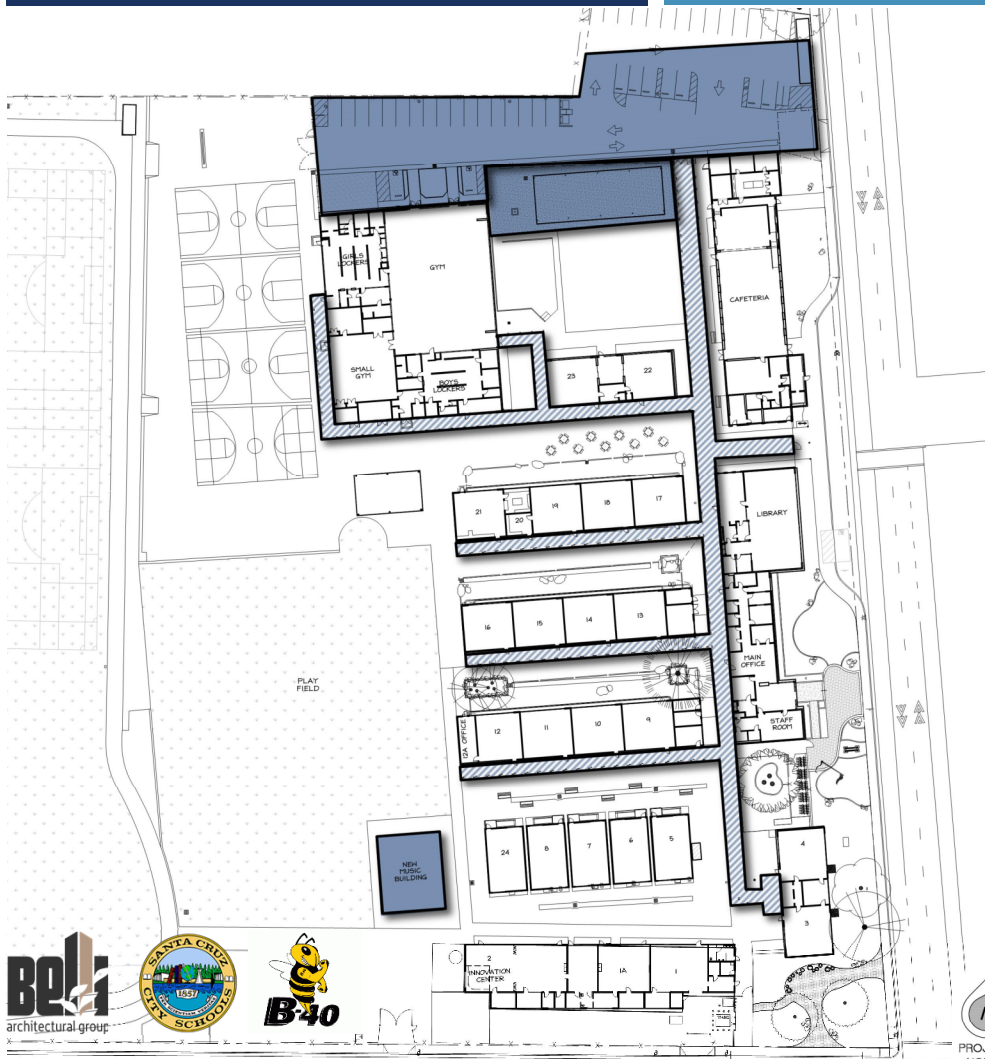


APRIL 23, 2020



PROJECT PHASING



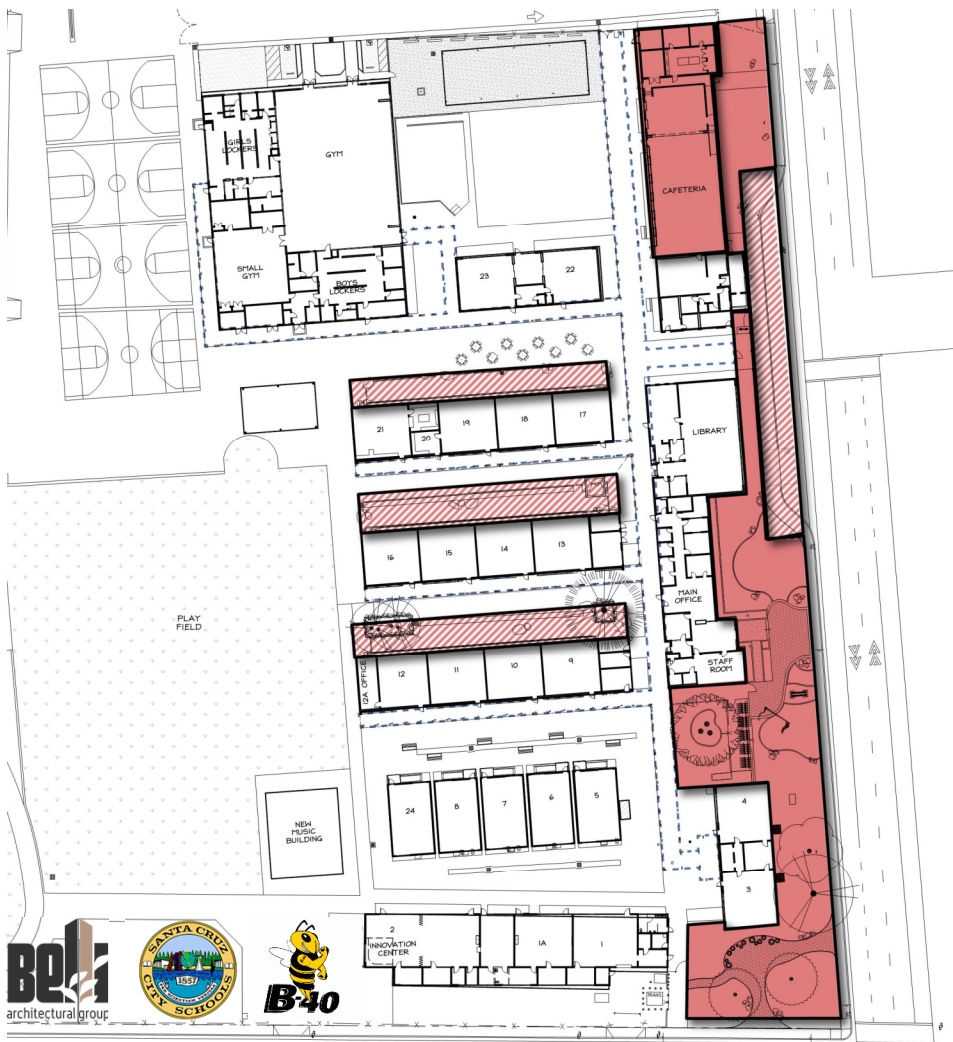


WORK COMPLETED TO DATE

LEGEND

Work Completed



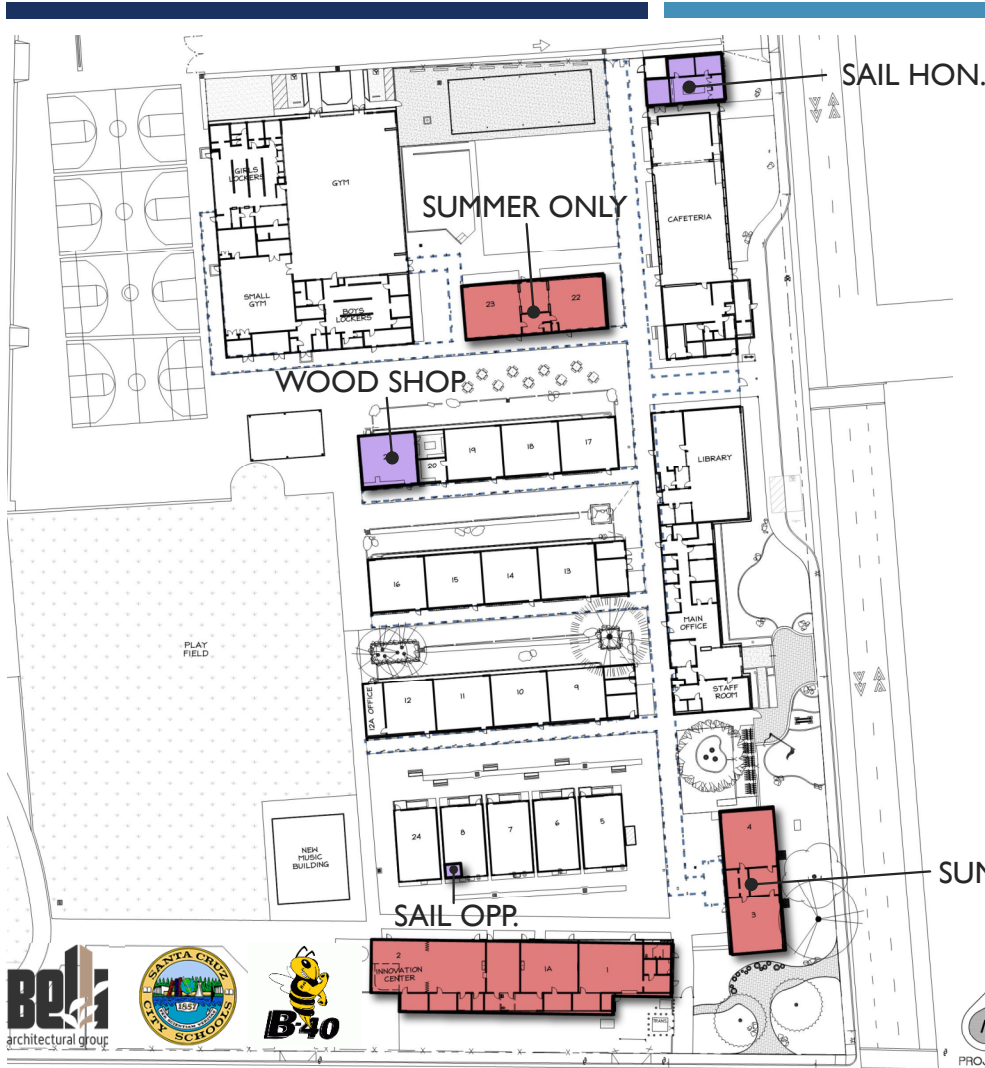


PRESENT TO FALL 20

LEGEND

Under Construction



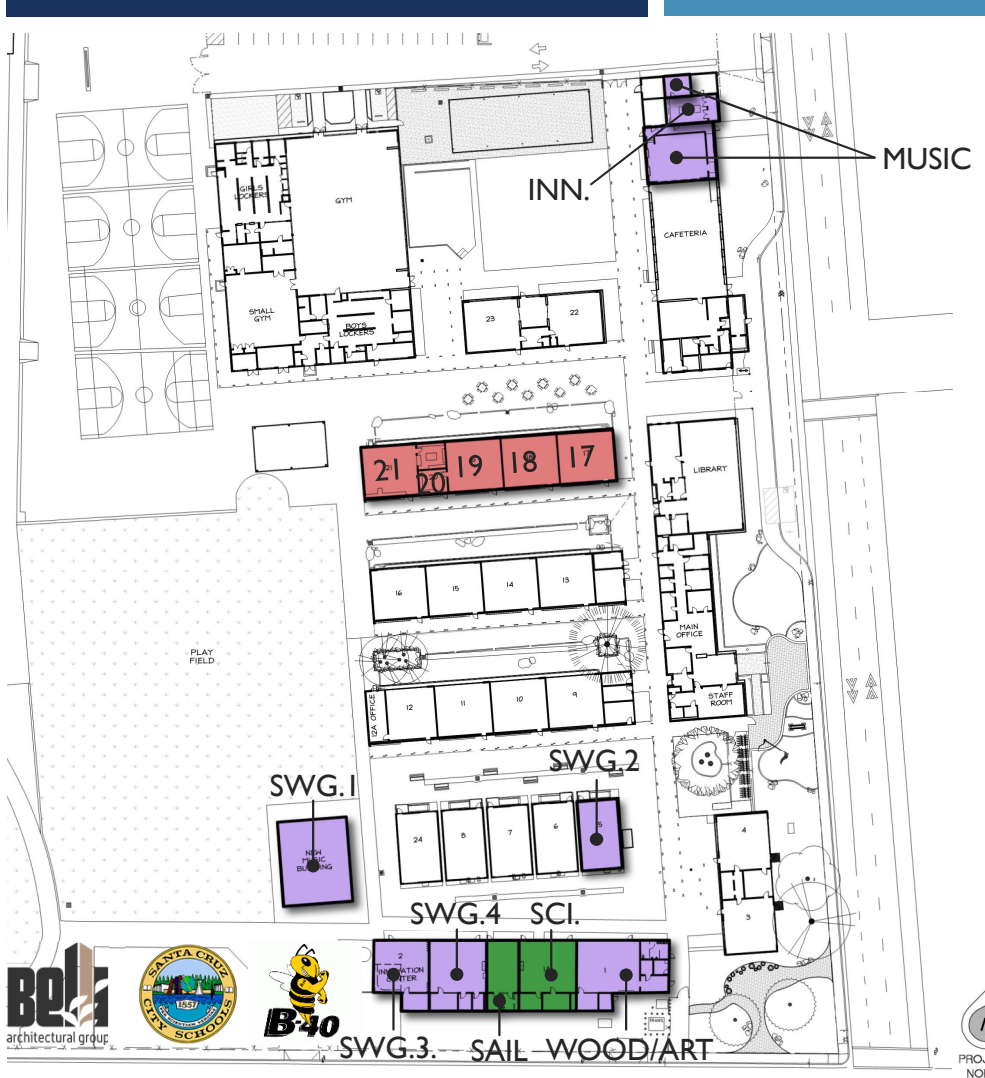


WINTER 20/21 TO SUMMER 21

LEGEND	
Under Construction	
Alternate Program Location	

- NOTES:**
- Wood Shop → Classroom 21
 - Sail Hon. & Laura's Office → MPR (Back of House)
 - Sail Opp. → Classroom 8
 - Innovation Center → Closed or Temp. Location





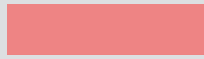


FALL 21 TO WINTER 21/22

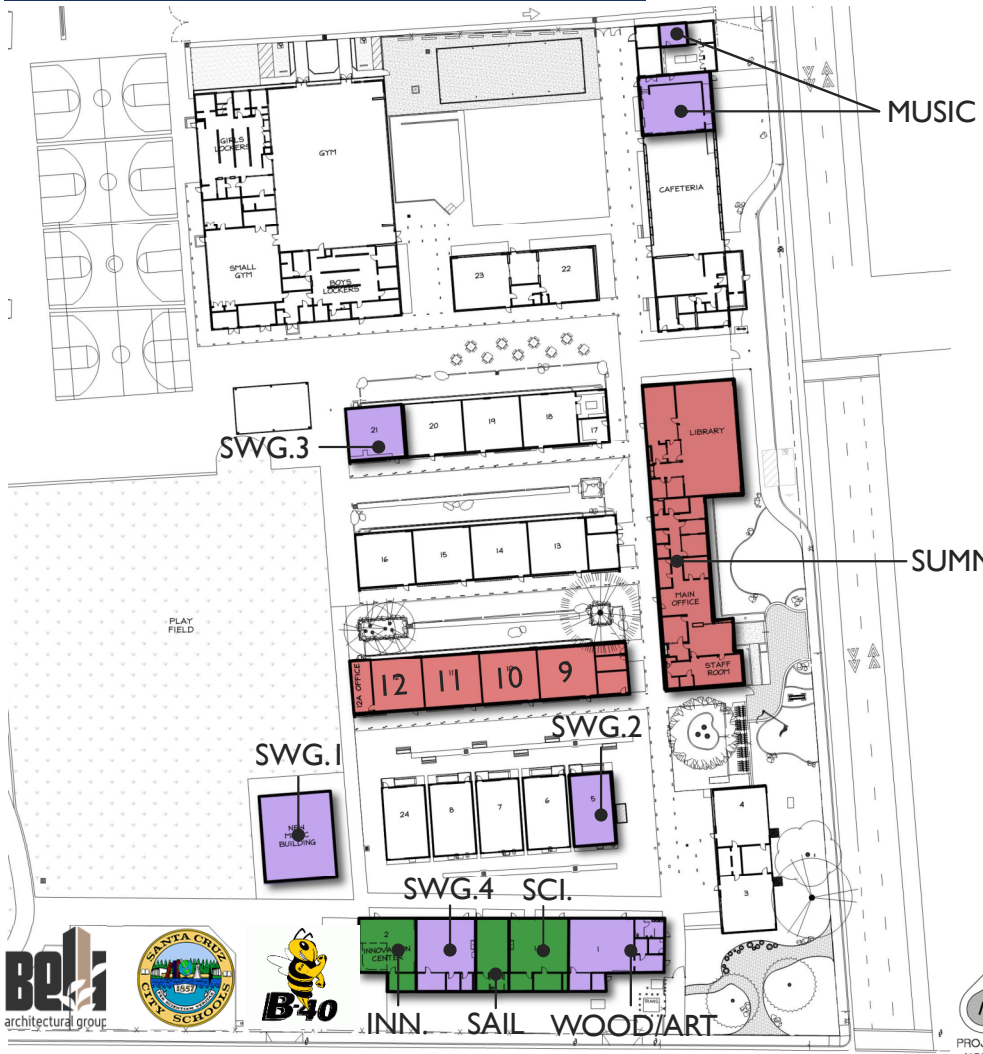
LEGEND	
Under Construction	
Alternate Program Location	
Final Program Location	

- NOTES:**
- Music Classroom → MPR Platform
 - Innovation Center → MPR (BOH)
 - Art (Classroom 21) → Wood Shop

WINTER 21/22 TO SUMMER 22

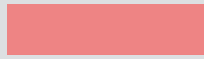
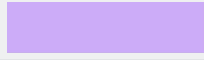

LEGEND

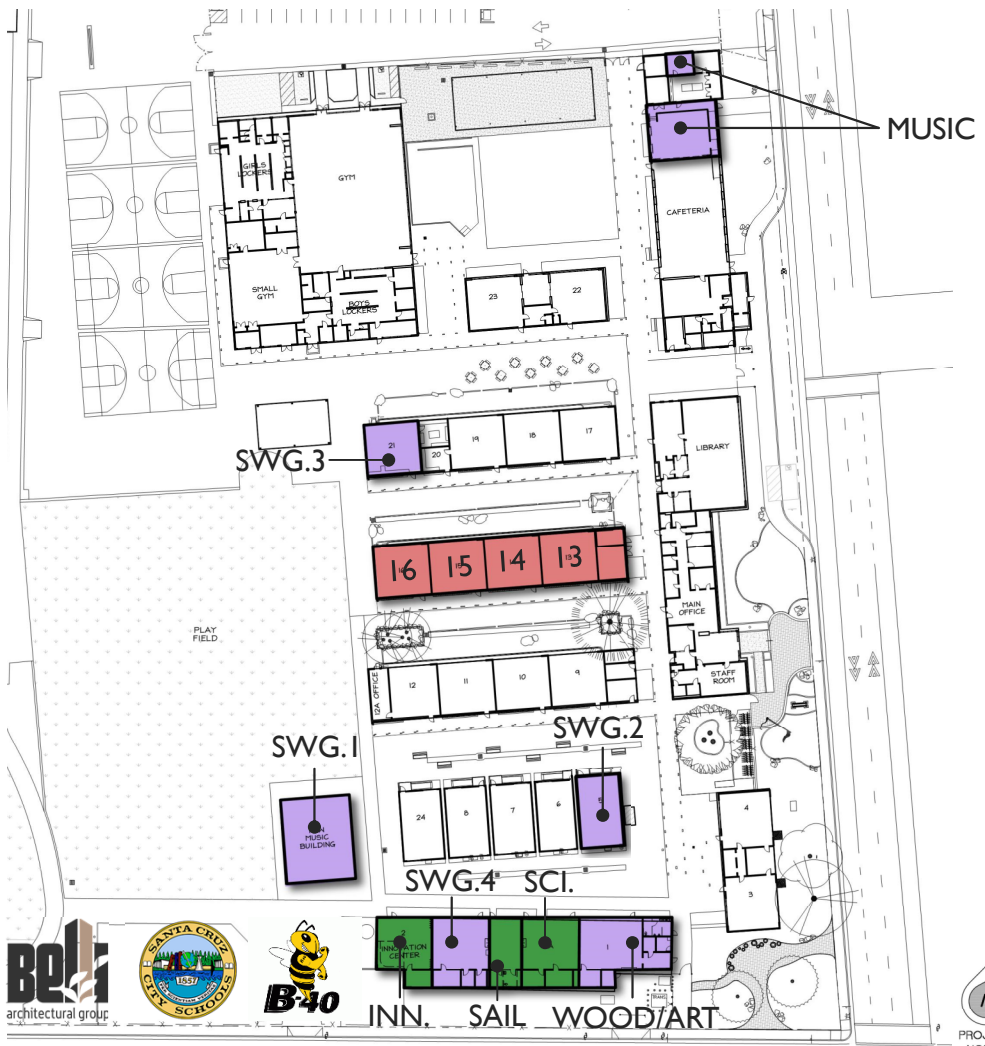
Under Construction	
Alternate Program Location	
Final Program Location	



FALL 22 TO WINTER 22/23


LEGEND

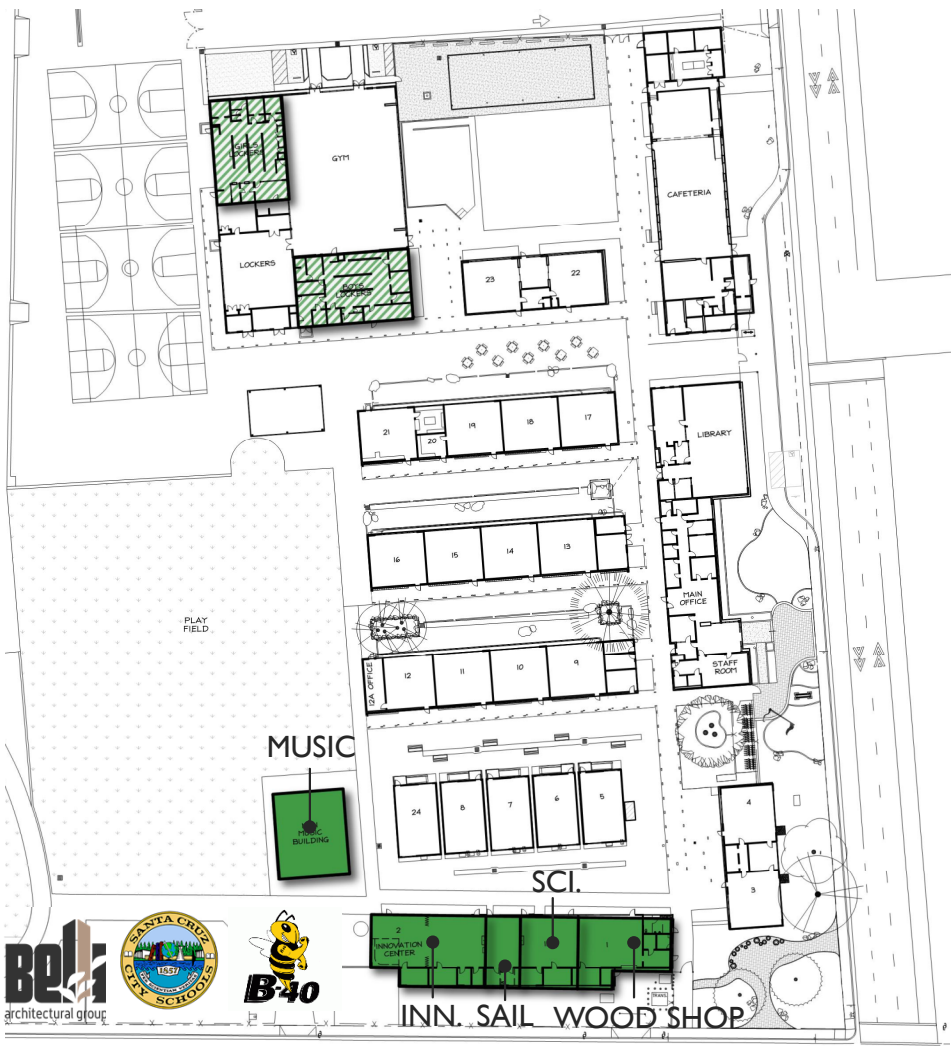
Under Construction	
Alternate Program Location	
Final Program Location	



WINTER 22/23: MODERNIZATION COMPLETE

LEGEND

Final Program Location 



CURRENT BOND BUDGETS & EXPENDITURES



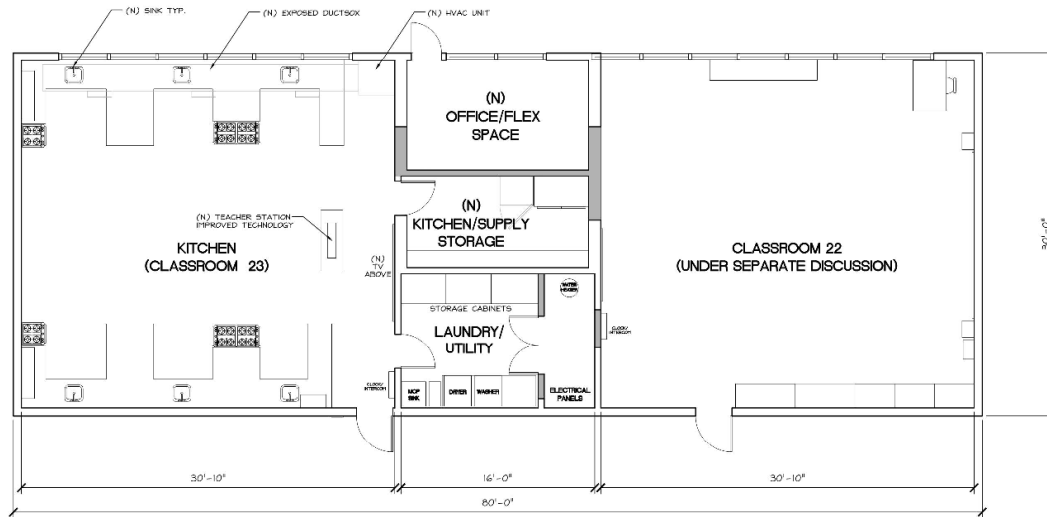
PROJECT NAME	BUDGET	EXPENDITURES
COMPLETED PROJECTS		
- ROOF REPLACEMENT		\$1.7M
- MUSIC BUILDING / PARKING LOT / COVERED LUNCH AREA		\$1.6M
- DATA INFRASTRUCTURE		\$300K
<u>SUBTOTAL</u>		<u>\$3.6M</u>
UNDER CONSTRUCTION		
- MPR PARTIAL MODERNIZATION	\$950K	
- STREET RESENCE IMPROVEMENTS	\$1.2M \$1.6M	
<u>SUBTOTAL</u>	<u>\$2.15M</u>	
DESIGN		
- CLASSROOM MODERNIZATION PHASE 1	\$3.2M	
- CLASSROOM MODERNIZATION PHASE 2	\$1.5M	
- LIBRARY / ADMINISTRATION MODERNIZATION	\$2.1M	
- CLASSROOM MODERNIZATION PHASE 3	\$1.6M	
- CLASSROOM MODERNIZATION PHASE 4	\$1.7M	
<u>SUBTOTAL</u>	<u>\$10.1M</u>	
PLANNING		
- TARGETED GYM IMPROVEMENTS	\$50K	
- EXTERIOR SITE SECURITY	\$50K	
- CARD ACCESS	\$250K	
<u>SUBTOTAL</u>	<u>\$350K</u>	
MISC.		
- MULTI-PROJECT OVERHEAD	\$800K	
GRAND TOTAL:	\$17M	
MEASURE A RESOURCE:	\$17,093,431	



PROJECT UPDATES



- GENERAL SCOPE OF WORK**
1. NEW INTERIOR PAINT
 2. NEW WINDOW COVERINGS (SHADES)
 3. NEW WINDOW SAFETY FILM
 4. REPLACE EXISTING CEILING IN-KIND
 5. NEW LED LIGHT FIXTURES
 6. HVAC UPGRADE
 7. IMPROVE VENTILATION/FRESH AIR
 8. FIRE ALARM/PUBLIC ANNOUNCEMENT SYSTEM UPGRADE
 9. TAGGING TECHNOLOGY UPGRADES
 10. EXTERIOR DOORS (REPLACED AS NECESSARY)
 11. DOOR HARDWARE UPGRADES (HIGH-TECH)
 12. NEW FLOORING/WALL BASE
 13. NEW PANDUIT (AS NECESSARY)
 14. NEW CASEWORK
 15. NEW WASHER/DRYER -UPDATES TO LAUNDRY ROOM
 16. GENERAL MAINTENANCE, PLUMBING, ETC.

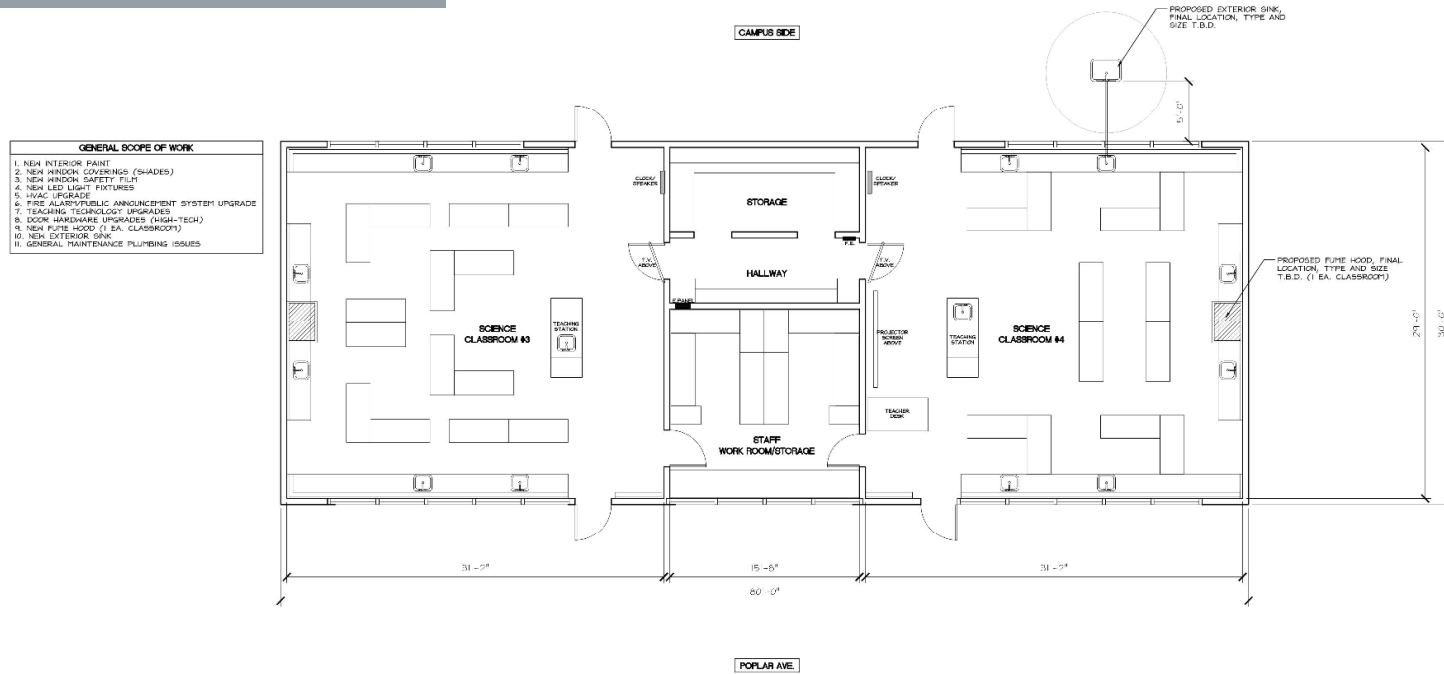


BRANCIFORTE MIDDLE SCHOOL
 BUILDING 'B' - MODERNIZATION DESIGN WORKSHOP
 PRELIMINARY PROPOSED FLOOR PLAN
 SCALE: 1/4" = 1'-0"



BRANCIFORTE MS

PHASE I CLASSROOM MODERNIZATION

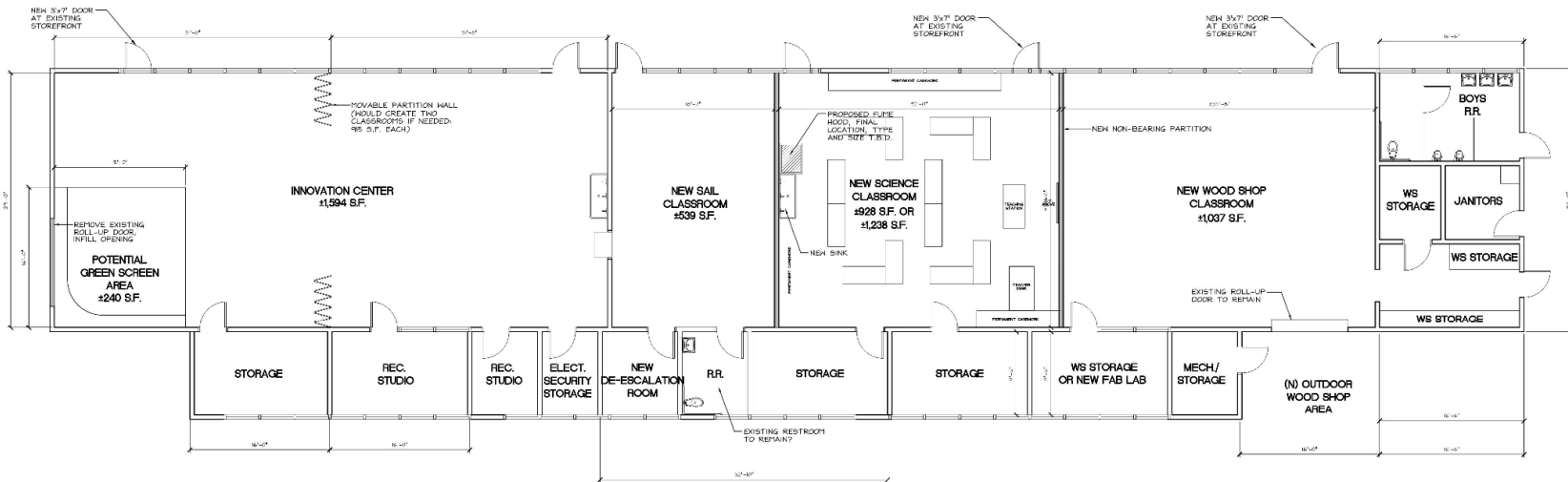


BRANCIFORTE MIDDLE SCHOOL
 BUILDING 'H' ROOM #3,4 - MODERNIZATION DESIGN WORKSHOP
 PRELIMINARY PROPOSED FLOOR PLAN
 SCALE: 1/4" = 1'-0"



BRANCIFORTE MS

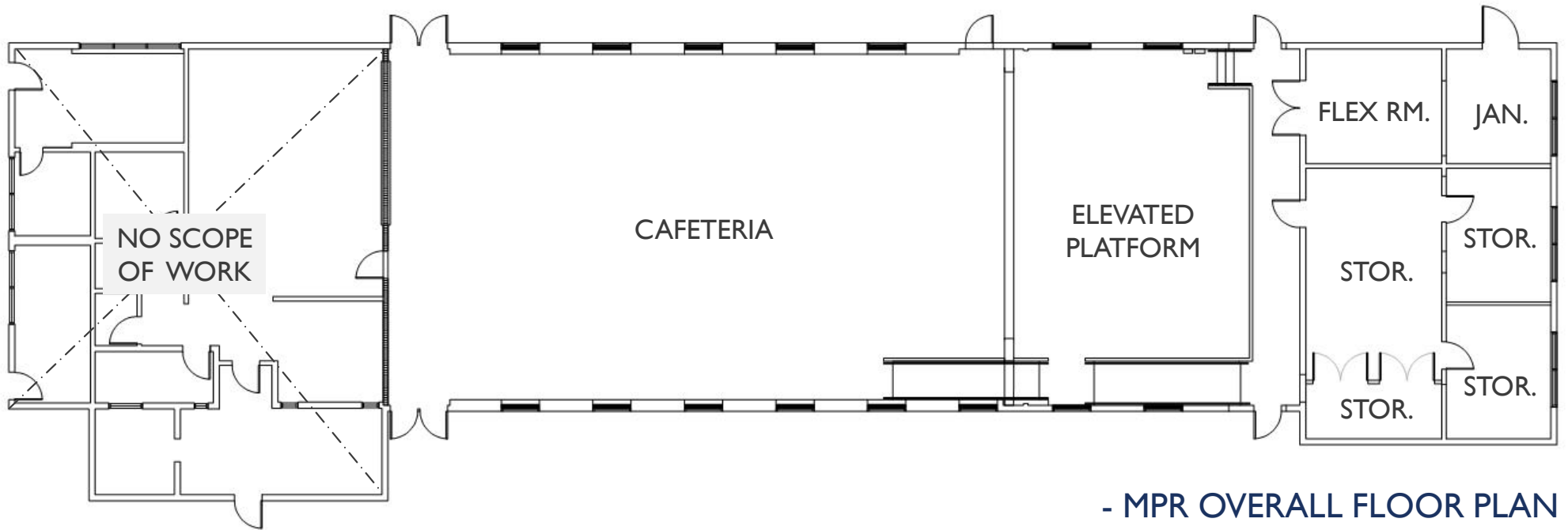
PHASE I CLASSROOM MODERNIZATION



BRANCIFORTE MIDDLE SCHOOL
BUILDING 'J' - MODERNIZATION DESIGN WORKSHOP
PRELIMINARY PROPOSED FLOOR PLAN
SCALE: 3/16" = 1'-0"

BRANCIFORTE MS

MPR MODERNIZATION

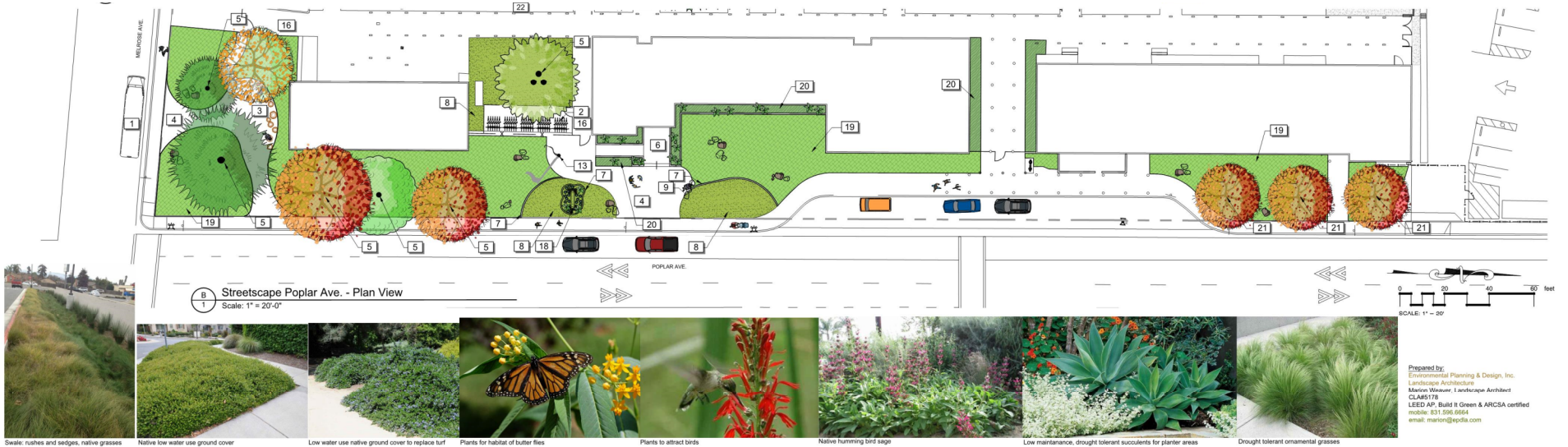


- MPR OVERALL FLOOR PLAN



BRANCIFORTE MS

STREET PRESENCE IMPROVEMENTS



Swale: rushes and sedges, native grasses



Native low water use ground cover



Low water use native ground cover to replace turf



Plants for habitat of butler flies



Plants to attract birds



Native hummingbird sage



Low maintenance, drought tolerant succulents for planter areas



Drought tolerant ornamental grasses

CONCEPTUAL DESIGN SITE PLAN





THANK YOU