



# Measure A & B 19six Architects Project Updates



NOVEMBER 2021

An aerial photograph of a coastal town, likely San Jose, California. The town features a dense grid of streets and is surrounded by green hills and a bay. The water is a deep blue-green color. The town is built on a peninsula or a narrow strip of land. The hills are covered in dense green vegetation. The bay is visible on the right side of the image, with some rocky outcrops and a sandy beach area. The overall scene is a mix of urban development and natural landscape.

# AGENDA

Bay View Elementary School

DeLaveaga Elementary School

Branciforte Small Schools

Soquel High School

Natural Bridges Campus

# BAY VIEW ELEMENTARY SCHOOL – MEASURE B

---



## CAMPUS PROJECTS

ADMINISTRATION MODERNIZATION

LIBRARY MODERNIZATION

CLASSROOM MODERNIZATION

PLAYGROUND UPDATE

# BAY VIEW ELEMENTARY SCHOOL – MEASURE B



PROJECT	START	COMPLETE	PROJECT BUDGET
MULTI-PROJECT OVERHEAD	ONGOING	ONGOING	\$75,000
RE-ROOFING	COMPLETE	COMPLETE	\$925,529
WPENS RELOCATION & SITE WORK	CANCELLED	CANCELLED	\$79,588
NEW KINDERGARTEN BUILDING & SITE WORK	CANCELLED	CANCELLED	\$92,477
NEW CLASSROOM BUILDING & SITE WORK	COMPLETE	COMPLETE	\$3,697,791
CLASSROOM MODERNIZATION (PHASE 1)	COMPLETE	COMPLETE	\$6,516,188
CLASSROOM MODERNIZATION (PHASE 2)	COMPLETE	COMPLETE	\$225,518
PORTABLE DEMOLITION & SITE WORK	06/15/2021	08/05/2022	\$83,213
SITE INFRASTRUCTURE	06/10/2019	08/21/2021	\$50,825
CARD ACCESS SECURITY SYSTEM	06/10/2022	08/21/2022	\$190,000
DATA INFRASTRUCTURE IMPROVEMENTS	06/10/2019	08/21/2021	\$730,962
NEW CLASSROOM FURNITURE ( <i>STUDENTS ONLY</i> )	4/01/2021	08/15/2021	\$100,000
NEW PLAYGROUND & SHADE STRUCTURES	11/30/2020	8/05/2022	\$420,000
		<b>TOTAL COST</b>	<b>\$13,187,377</b>

READJUSTED SITE BUDGET: \$13,252,933

# BAY VIEW ELEMENTARY SCHOOL - ADMINISTRATION MODERNIZATION



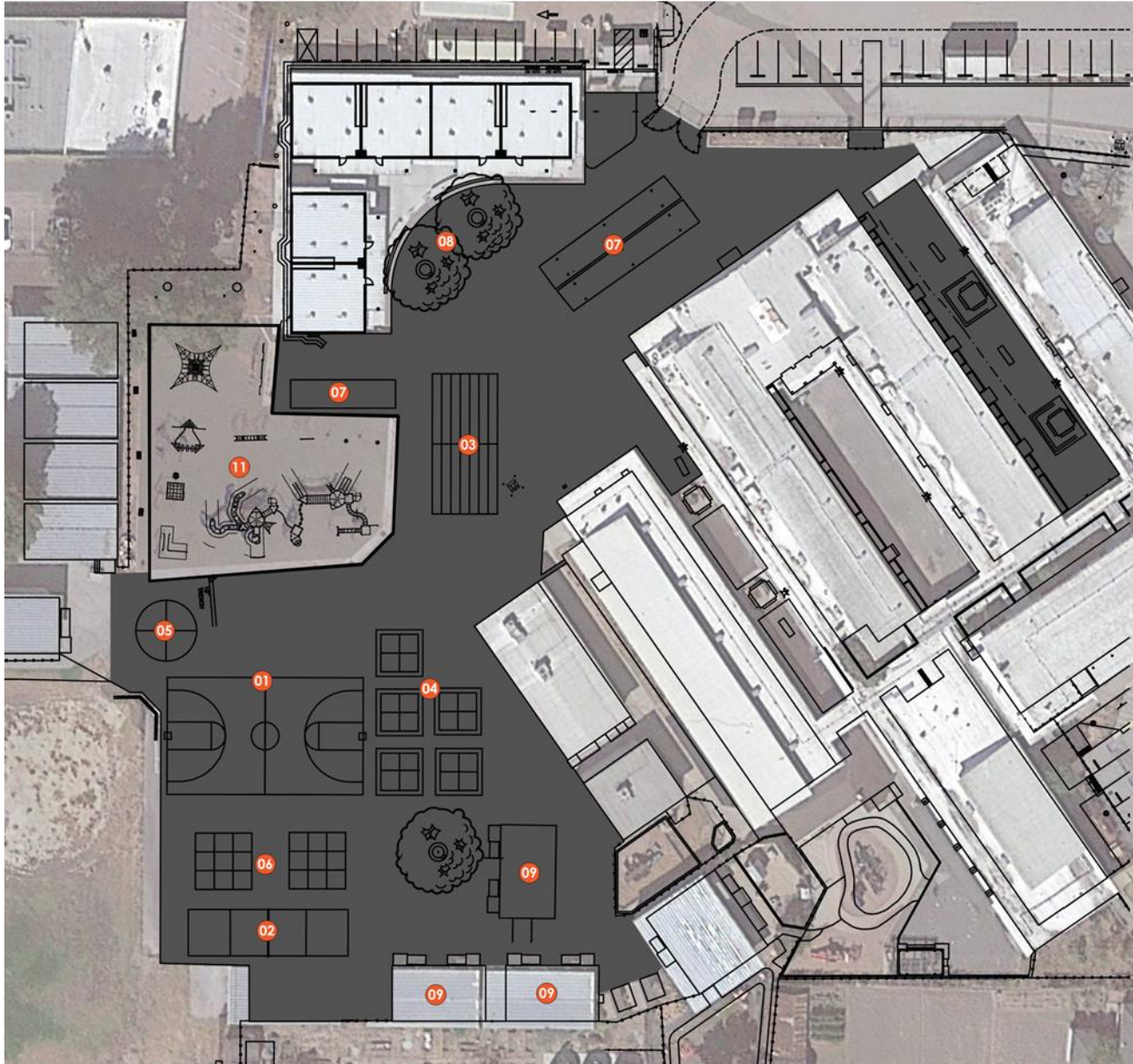
# BAY VIEW ELEMENTARY SCHOOL - LIBRARY MODERNIZATION



# BAY VIEW ELEMENTARY SCHOOL - CLASSROOM MODERNIZATION



# BAY VIEW ELEMENTARY SCHOOL – PLAYGROUND UPGRADE



## LEGEND

- 01 BASKETBALL COURT (1)
- 02 BALL WALL (1)
- 03 RUNNING & RELAYS (1)
- 04 FOURSQUARE COURTS (5)
- 05 COLOR CIRCLE (1)
- 06 NINE SQUARE COURT (1)
- 07 SHADE STRUCTURE (2)
- 08 TREE
- 09 PORTABLE
- 10 USA MAP (OPTIONAL)
- 11 PLAYGROUND

ASPHALT  
BLACKTOP





# DELAWEAGA ELEMENTARY SCHOOL – MEASURE B

---



## CAMPUS PROJECTS

ADMINISTRATION MODERNIZATION

LIBRARY MODERNIZATION

LITTLE THEATER UPDATE

KINDERGARTEN PLAYGROUND

PORTABLE DEMOLITION

# DELAVEAGA ELEMENTARY SCHOOL – MEASURE B



PROJECT	START	COMPLETE	PROJECT BUDGET
MULTI-PROJECT OVERHEAD	ONGOING	ONGOING	\$30,000
NEW SHADE STRUCTURE & PARKING LOT	COMPLETE	COMPLETE	\$1,372,745
NEW CLASSROOM BUILDING & SITE WORK	COMPLETE	COMPLETE	\$4,789,309
MODERNIZATION (PHASE 1)	08/01/2018	12/30/2020	\$7,357,133
MODERNIZATION (PHASE 2)	08/01/2018	12/30/2020	\$339,500
PORTABLE DEMOLITION & SITE WORK	06/15/2021	08/23/2021	\$100,000
SITE INFRASTRUCTURE	ONGOING	ONGOING	\$6,098
CARD ACCESS SECURITY SYSTEM	06/10/2019	08/21/2021	\$164,560
DATA INFRASTRUCTURE IMPROVEMENTS	06/10/2019	08/21/2021	\$334,542
		SITE BUDGET	<b>\$14,188,861</b>

# CAMPUS MODERNIZATION – ADMINISTRATION MODERNIZATION



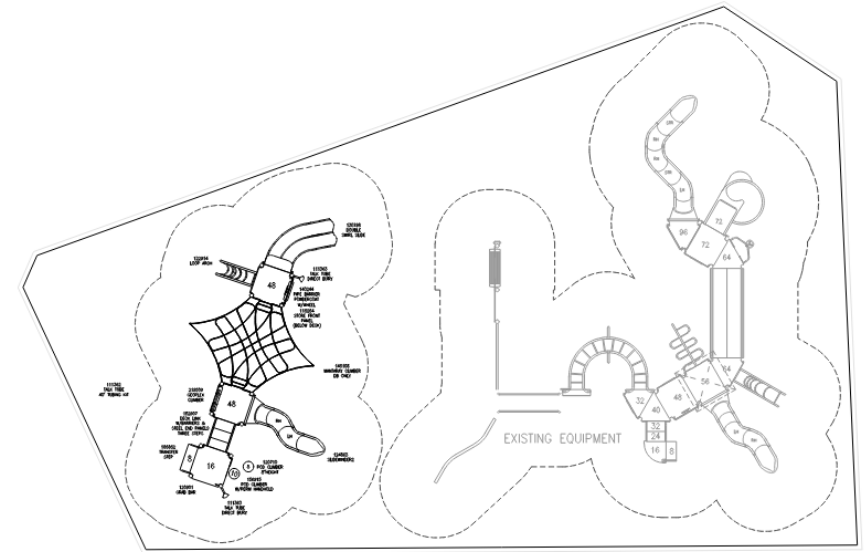
# DELAVEAGA ELEMENTARY SCHOOL – LIBRARY MODERNIZATION



# DELAVEAGA ELEMENTARY SCHOOL – LITTLE THEATER



# DELAVEAGA ELEMENTARY SCHOOL – KINDERGARTEN PLAYGROUND



# DELAVEAGA ELEMENTARY SCHOOL – PORTABLE DEMOLITION



# BRANCIFORTE SMALL SCHOOLS – MEASURE A & B



CAMPUS PROJECTS  
NEW AFE CAMPUS  
ELEVATOR UPDATE



# BRANCIFORTE SMALL SCHOOLS – MEASURE A & B



PROJECT	START	COMPLETE	PROJECT BUDGET
MULTI-PROJECT OVERHEAD	ONGOING	ONGOING	\$37,182
NEW PLAYGROUND & SHADE STRUCTURE	COMPLETE	COMPLETE	\$570,685
NEW CLASSROOM BUILDING & SITE WORK	COMPLETE	COMPLETE	\$3,385,259
NEW AFE CAMPUS	12/15/2019	12/31/2021	\$2,484,569
MODERNIZATION	03/01/2021	08/15/2022	\$1,540,550
PORTABLE DEMOLITION & SITE WORK	06/15/2021	08/23/2021	\$60,000
SITE INFRASTRUCTURE	ONGOING	ONGOING	\$10,367
CARD ACCESS SECURITY SYSTEM	06/10/2019	08/21/2021	\$150,000
DATA INFRASTRUCTURE IMPROVEMENTS	06/10/2019	08/21/2021	\$250,000
		SITE BUDGET	<b>\$8,579,099</b>

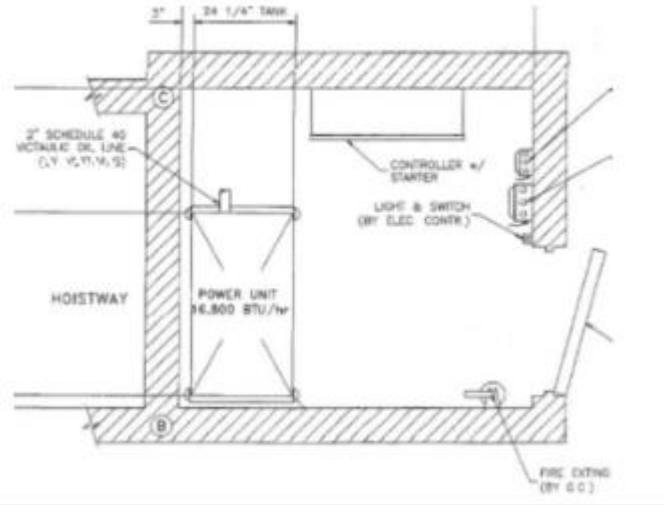
# BRANCIFORTE SMALL SCHOOLS – NEW AFE CAMPUS



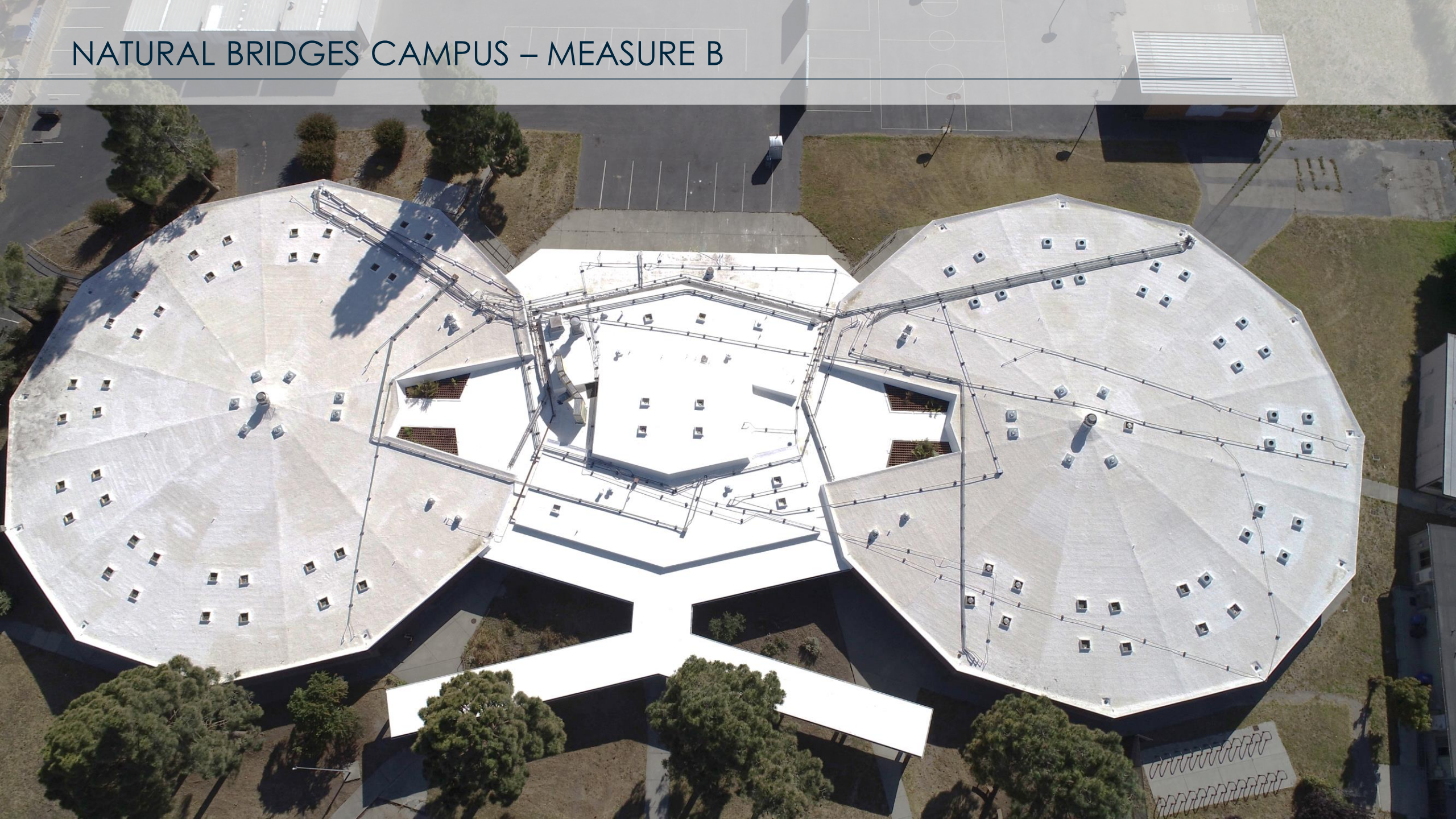
# BRANCIFORTE SMALL SCHOOLS – NEW AFE CAMPUS



# BRANCIFORTE SMALL SCHOOLS – ELEVATOR UPDATE



NATURAL BRIDGES CAMPUS – MEASURE B



# NATURAL BRIDGES CAMPUS – MEASURE B



PROJECT	START	COMPLETE	PROJECT BUDGET
MULTI-PROJECT OVERHEAD	COMPLETE	COMPLETE	\$10,000
CAMPUS RE-ROOFING	COMPLETE	COMPLETE	\$1,537,051
GYMNASIUM MODERNIZATION PHASE 1	COMPLETE	COMPLETE	\$809,077
GYMNASIUM MODERNIZATION PHASE 2	COMPLETE	COMPLETE	\$1,196,092
MODERNIZATION AND REPAIRS	COMPLETE	COMPLETE	\$583,172
ARTIFICIAL FIELD	COMPLETE TO DATE	COMPLETE TO DATE	\$106,061
		EXPENDITURES	<b>\$5,421,709</b>

# SOQUEL HIGH SCHOOL – MEASURE A



## CAMPUS PROJECTS

WING 100 & 200 MODERNIZATION

RE-ROOFING

SECURITY FENCING

CULINARY ARTS CLASSROOM

FITNESS CENTER MODERNIZATION

# SOQUEL HIGH SCHOOL – MEASURE A BUDGETS

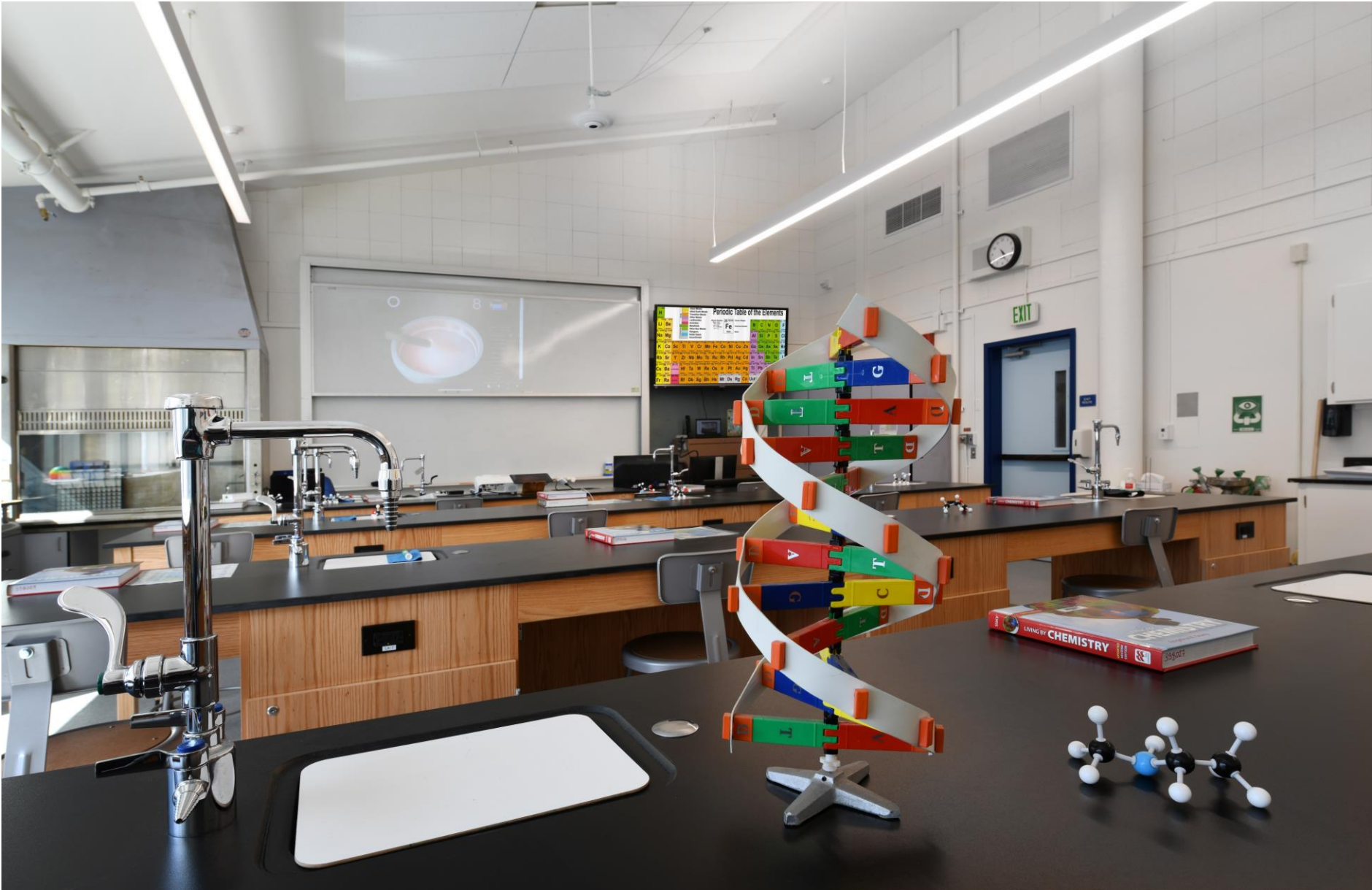
SITE BUDGET: \$34,830,967



PROJECT	START	COMPLETE	BUDGET
MULTI-PROJECT OVERHEAD	ONGOING	ONGOING	\$348,309.67
POOL (BY BELLI ARCHITECTS)	COMPLETE	COMPLETE	\$7,408,902.00
SITE INFRASTRUCTURE	COMPLETE	COMPLETE	\$3,750,000.00
NEW CONCESSIONS BUILDING & RAMP	COMPLETE	COMPLETE	\$1,826,631.00
TENNIS COURTS	COMPLETE	COMPLETE	\$209,524.00
INTERIM HOUSING (SOFT COSTS)	-	-	\$118,542.00
MODERNIZATION PHASE 1: WING 300	COMPLETE	COMPLETE	\$1,937,183.00
MODERNIZATION PHASE 2: WING 100 & 200	10/1/2019	COMPLETE	\$12,532,383.45
MODERNIZATION PHASE 3: SITE WORK	COMPLETE	COMPLETE	\$339,500.00
CARD ACCESS SECURITY SYSTEM	06/10/2019	08/2021	\$308,646.00
DATA INFRASTRUCTURE IMPROVEMENTS	06/10/2019	08/2021	\$905,295.00
FIELDS - COPS LOAN	-	-	\$1,527,272.00
EXTERNAL SITE SECURITY (CAMERA INSTALLATION)	08/2020	04/2021	\$93,894.00
PERFORMING ARTS CENTER (PROGRAMMING ONLY)	-	-	\$161,112.50
RE-ROOFING	01/2021	10/2021	\$1,800,000.00
SECURITY FENCING	08/2021	03/2022	\$250,000.00
FITNESS CENTER MODERNIZATION	08/2021	12/2022	\$1,000,000.00
CULINARY ARTS CLASSROOM	08/2021	08/2023	\$800,000



# SOQUEL HIGH SCHOOL – WING 100 & 200 MODERNIZATION



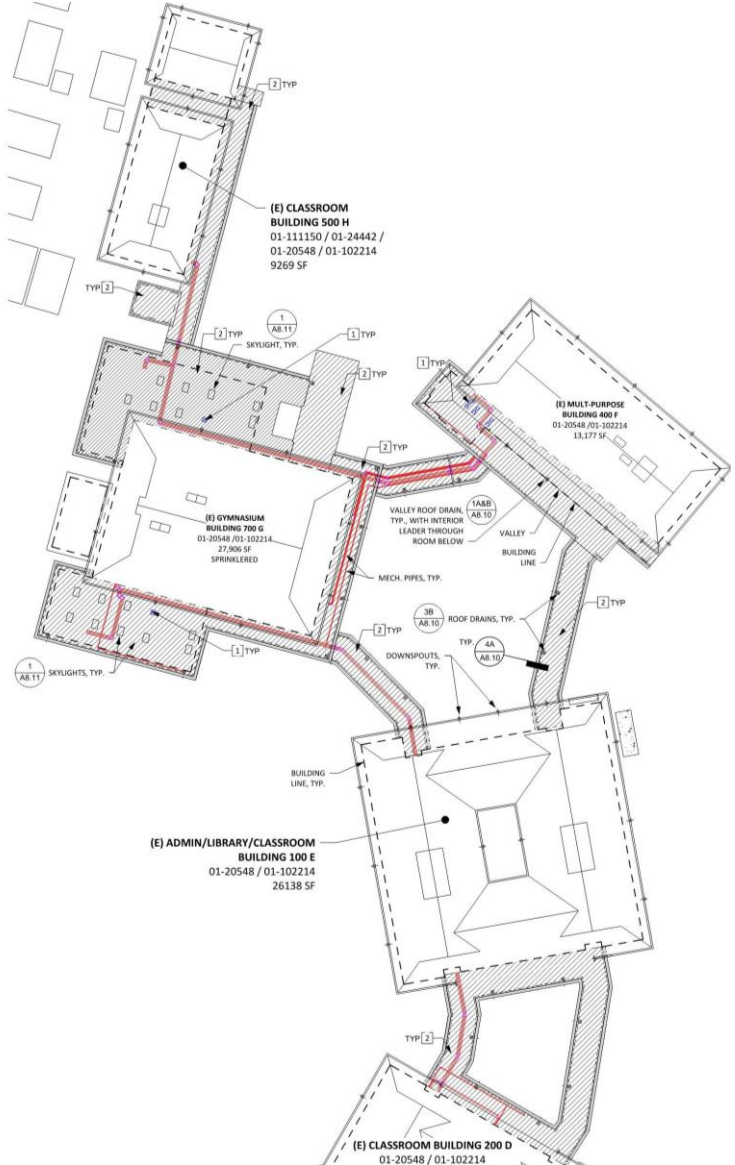
# SOQUEL HIGH SCHOOL – WING 100 & 200 MODERNIZATION



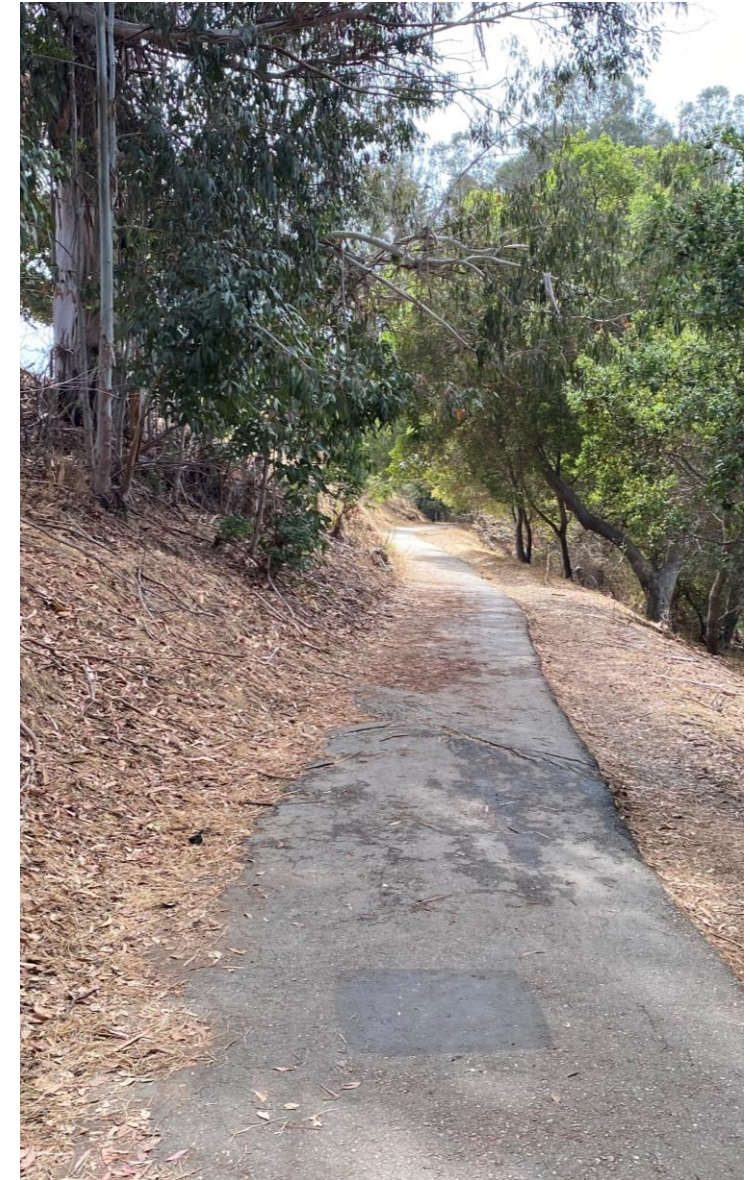
# SOQUEL HIGH SCHOOL – WING 100 & 200 MODERNIZATION



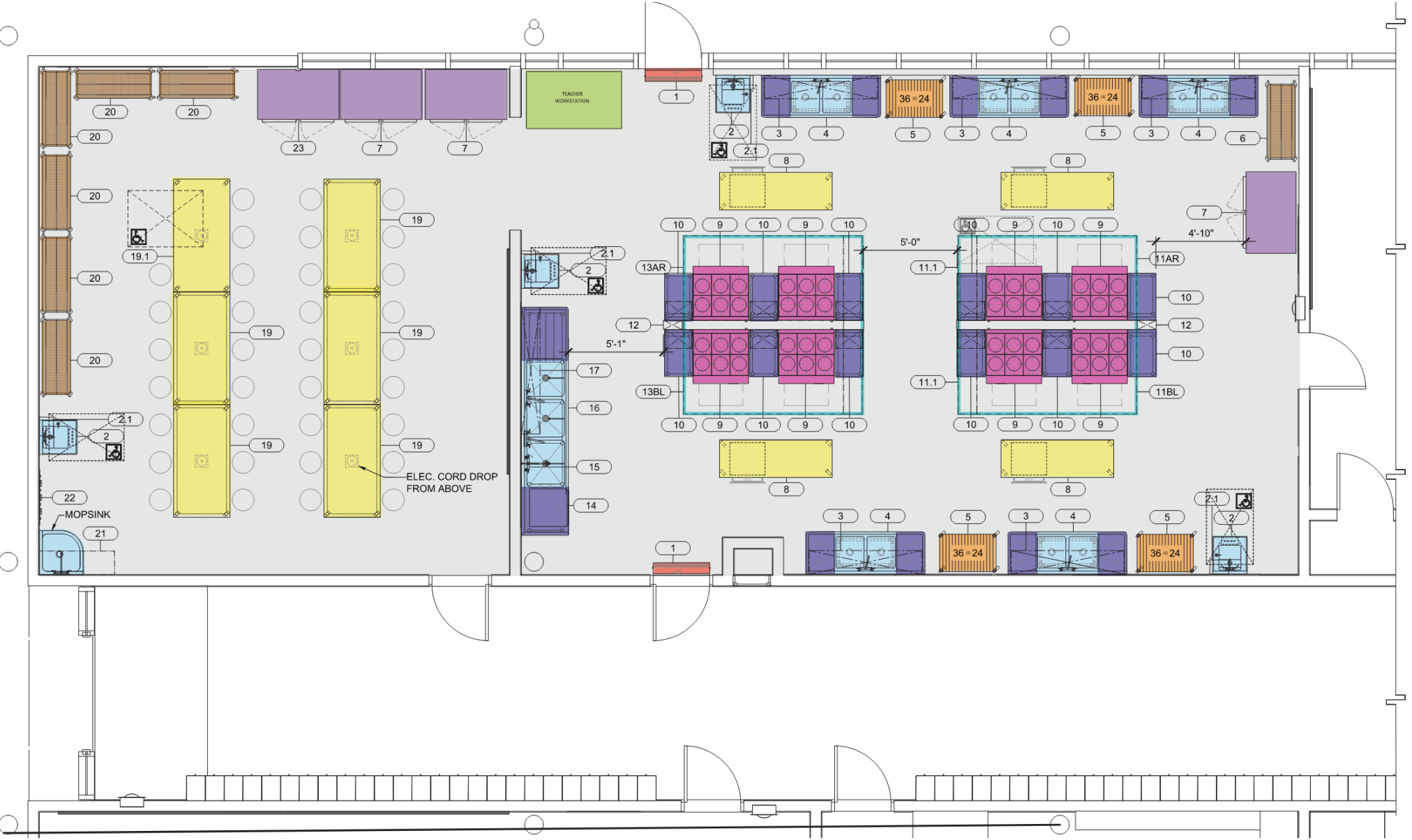
# SOQUEL HIGH SCHOOL – RE-ROOFING



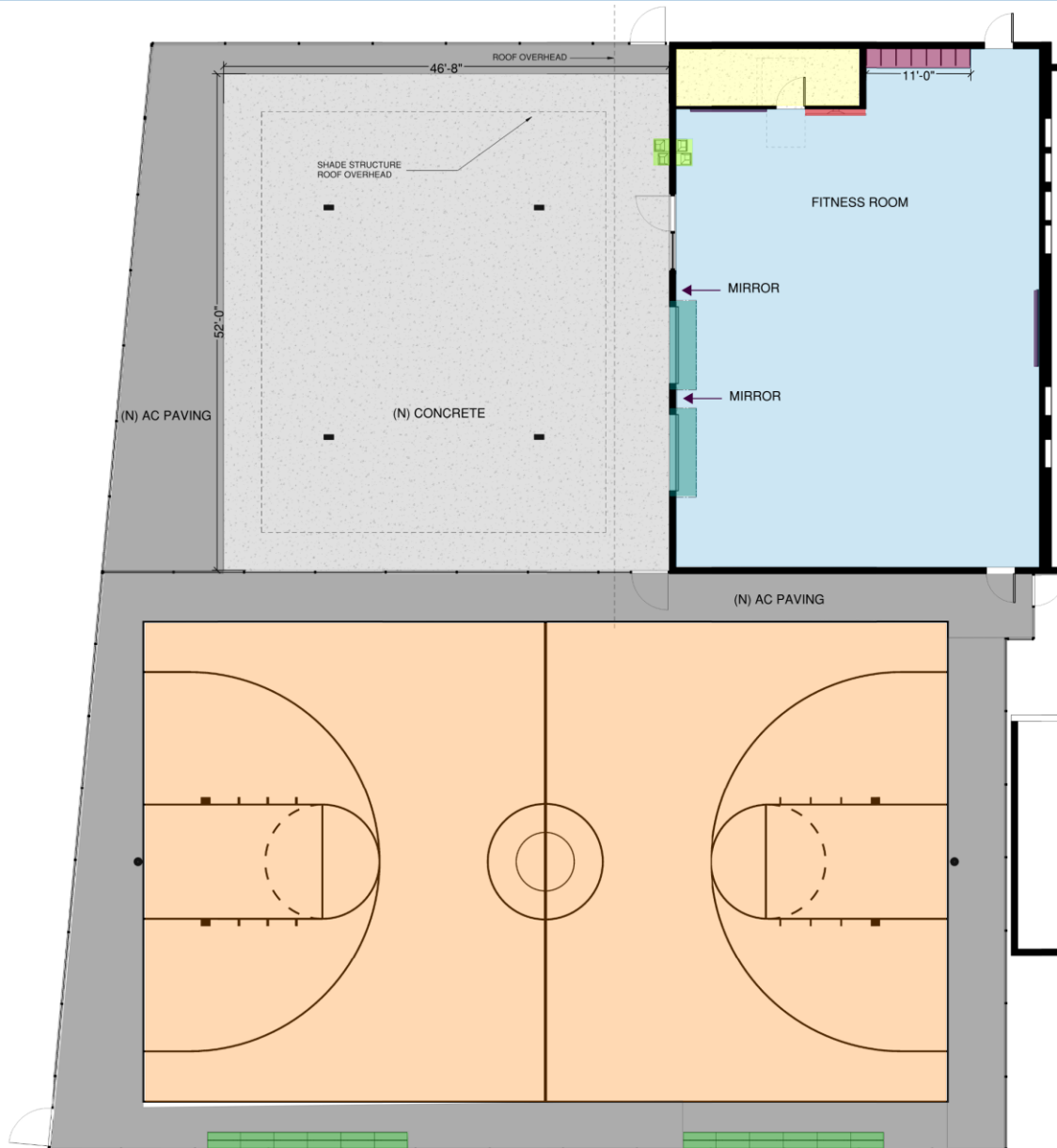
# SOQUEL HIGH SCHOOL – SECURITY FENCING



# SOQUEL HIGH SCHOOL – CULINARY ARTS CLASSROOM



# SOQUEL HIGH SCHOOL – FITNESS CENTER MODERNIZATION



MODERNIZED ELECTRICAL ROOM



NEW ELECTRICAL ROLL-UP DOORS



#49 WALL CUBBY - 16"w x 14"h x 24"d



2x HI-LOW DRINKING FOUNTAINS



50' x 84' BASKETBALL COURT



6' HEAVY-DUTY TEAM BENCH  
W/O BACK



PORCELAIN ON STEEL  
MAGNETIC WHITEBOARD



RUBBER FLOORING OVER THE  
SEALED CONCRETE FLOORING

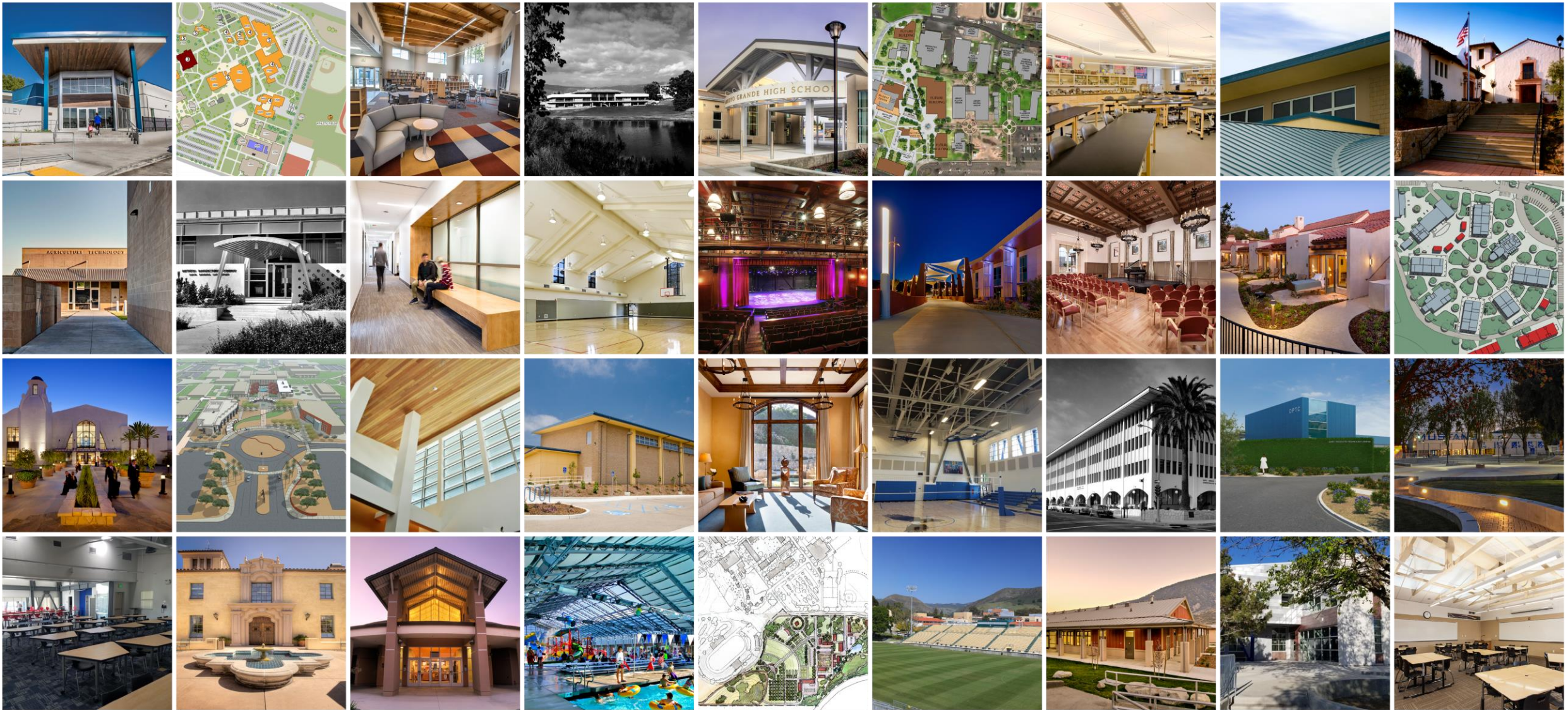


75" TV WALL MOUNT



44' x 36' METAL SHADE STRUCTURE





Thank You

nine  
teen  
six  
ARCHITECTS  
formerly MADI

19.6