

Gault Elementary School | Update

SANTA CRUZ CITY SCHOOLS | PRINCIPAL MEETING 05 AUGUST 2020

BARTOS
ARCHITECTURE

COLLABORATION
ADVOCACY
RESEARCH
EDUCATION

Principal Update: **Gault Elementary School**

Past

- ✓ Historic Roof Restoration: Complete.
- ✓ Water Intrusion at “Swamp” Repairs, Complete.
- ✓ Exterior Building Paint, Complete.

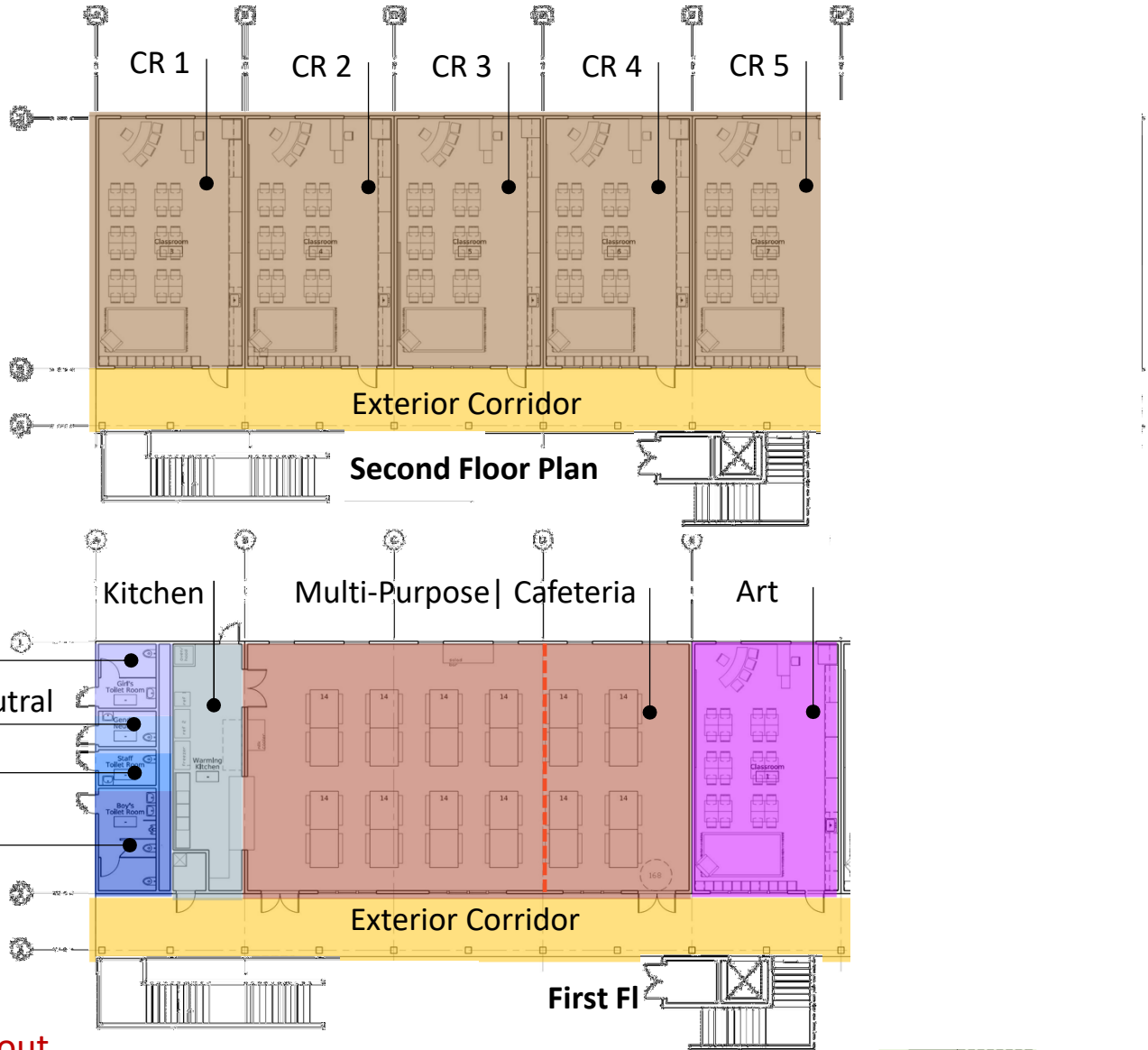
Ongoing

- Site Security
- Classroom Technology

Future

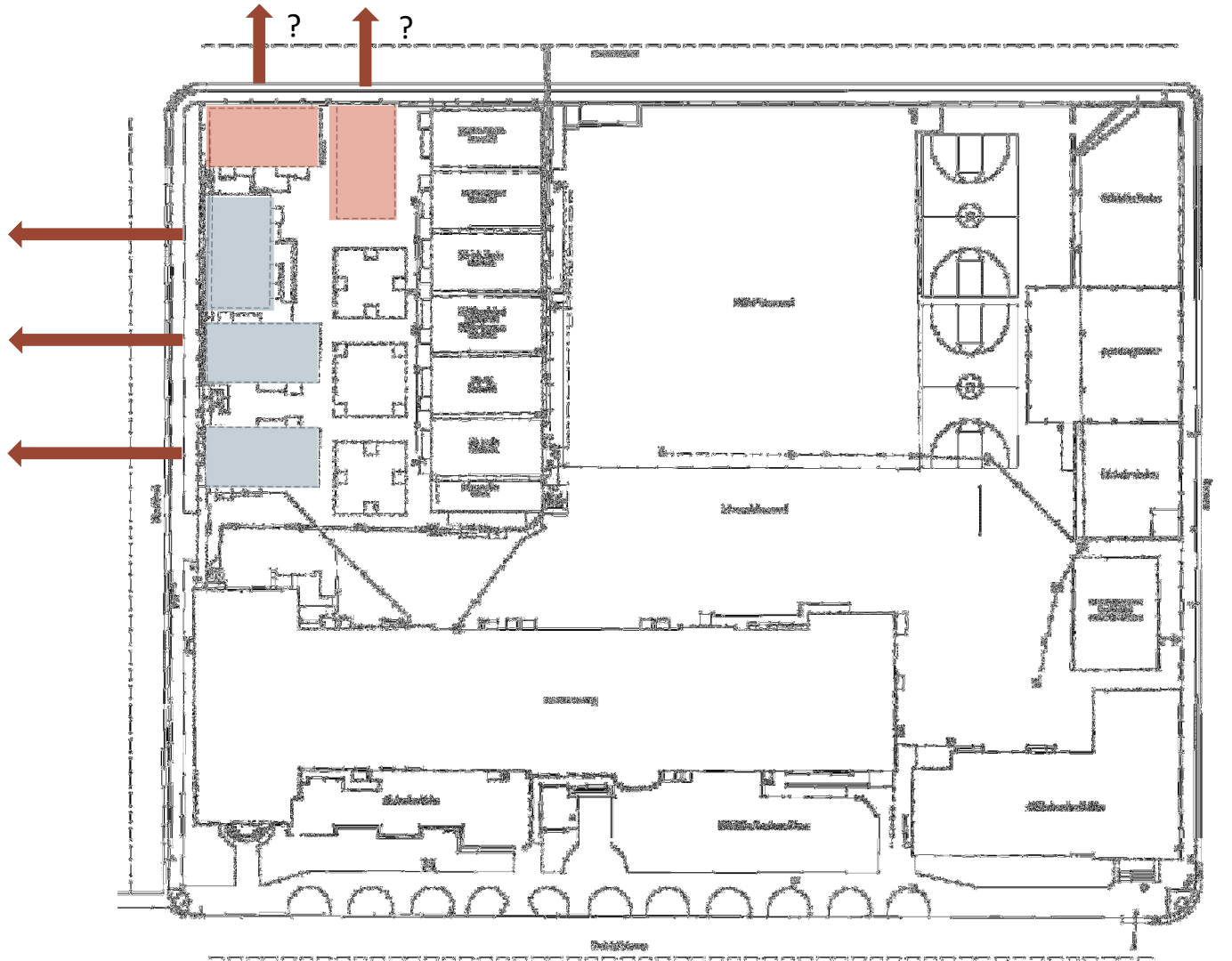
- Relocation / site preparation for New Building
- New Two-Story Modular Classroom Building

Principal Update: Gault Elementary School



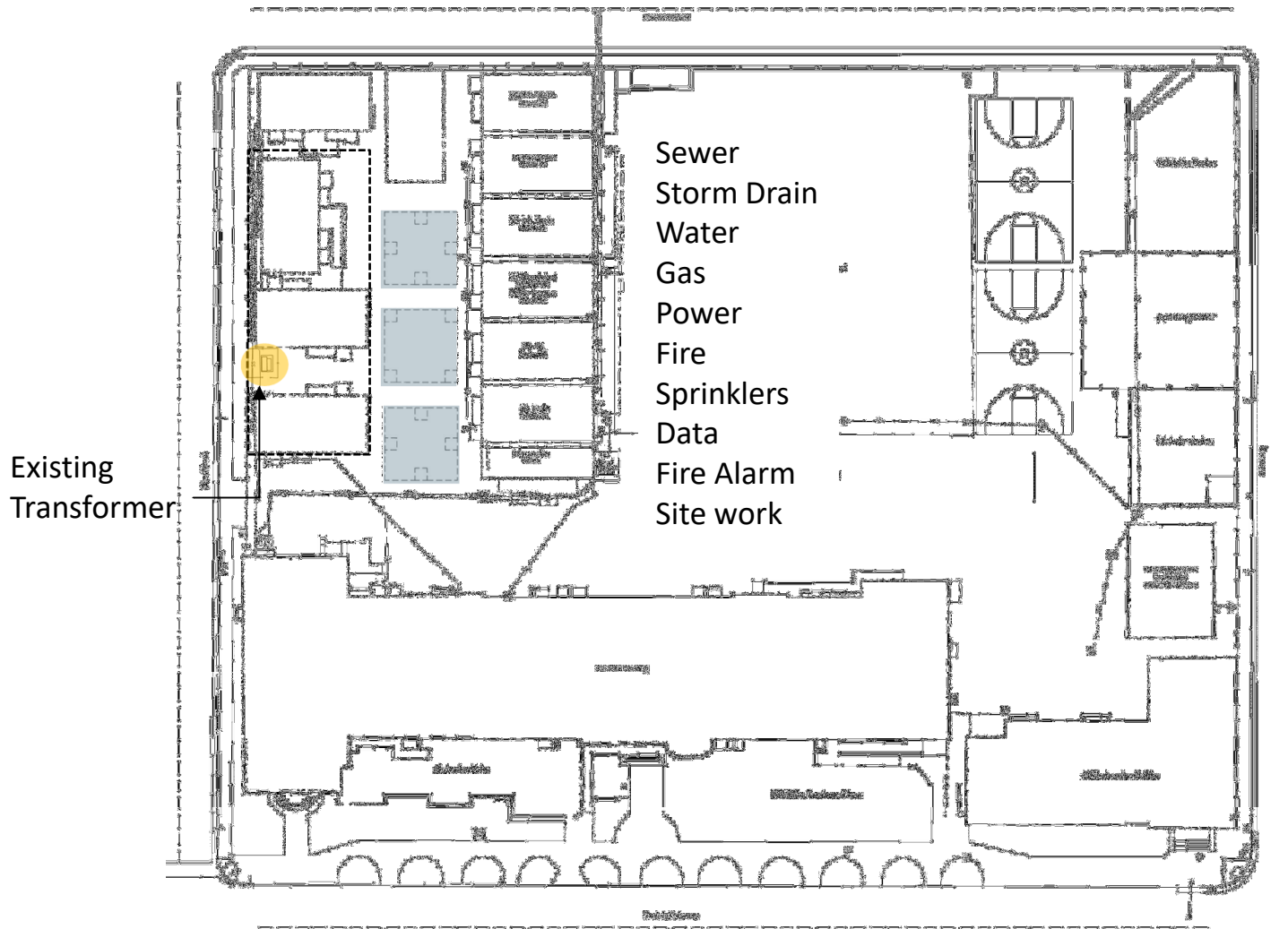
Current Layout

Principal Update: Gault Elementary School



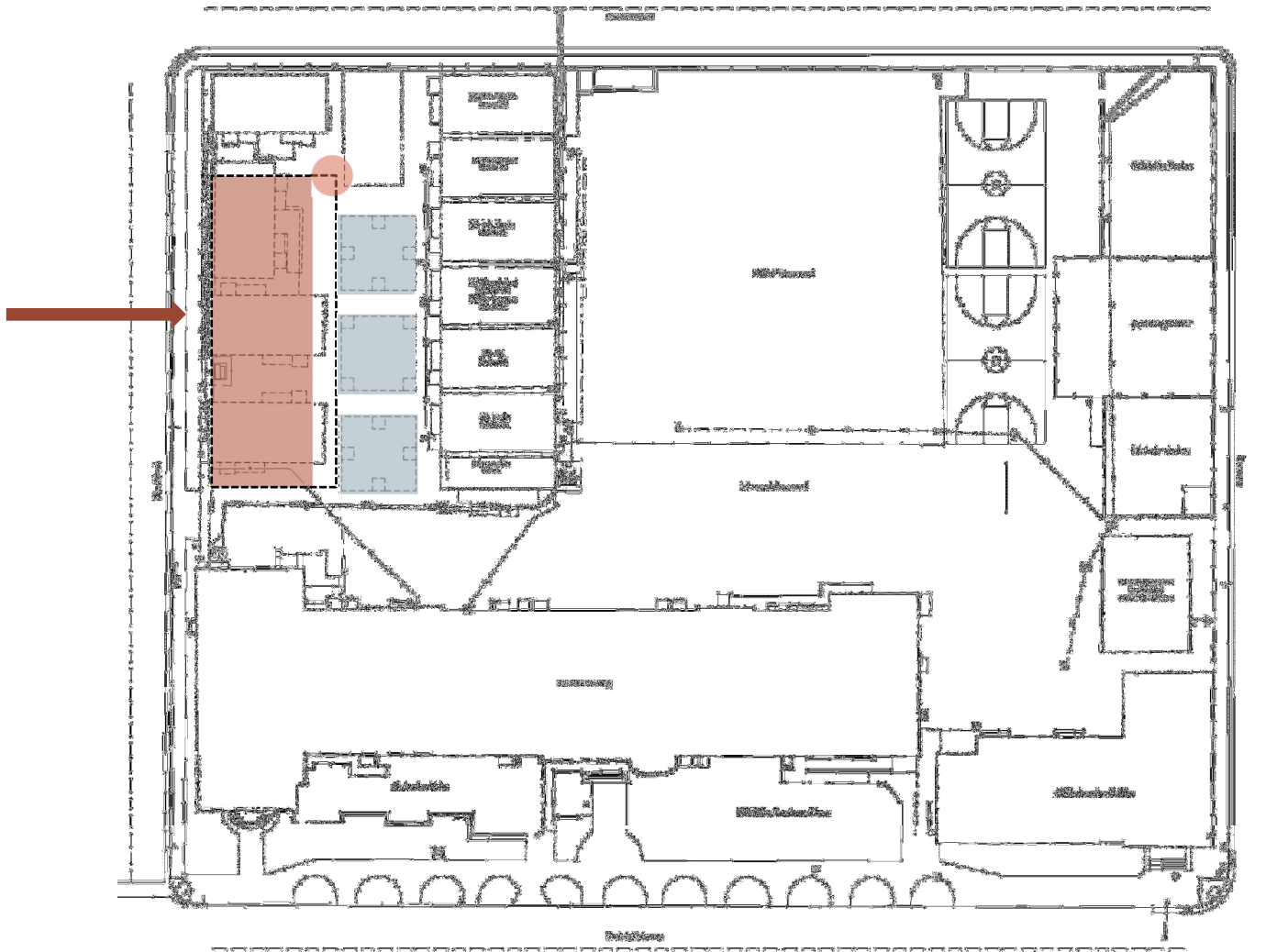
Phase 1 – Remove portables

Principal Update: Gault Elementary School



Phase 2 – Site Package

Principal Update: Gault Elementary School



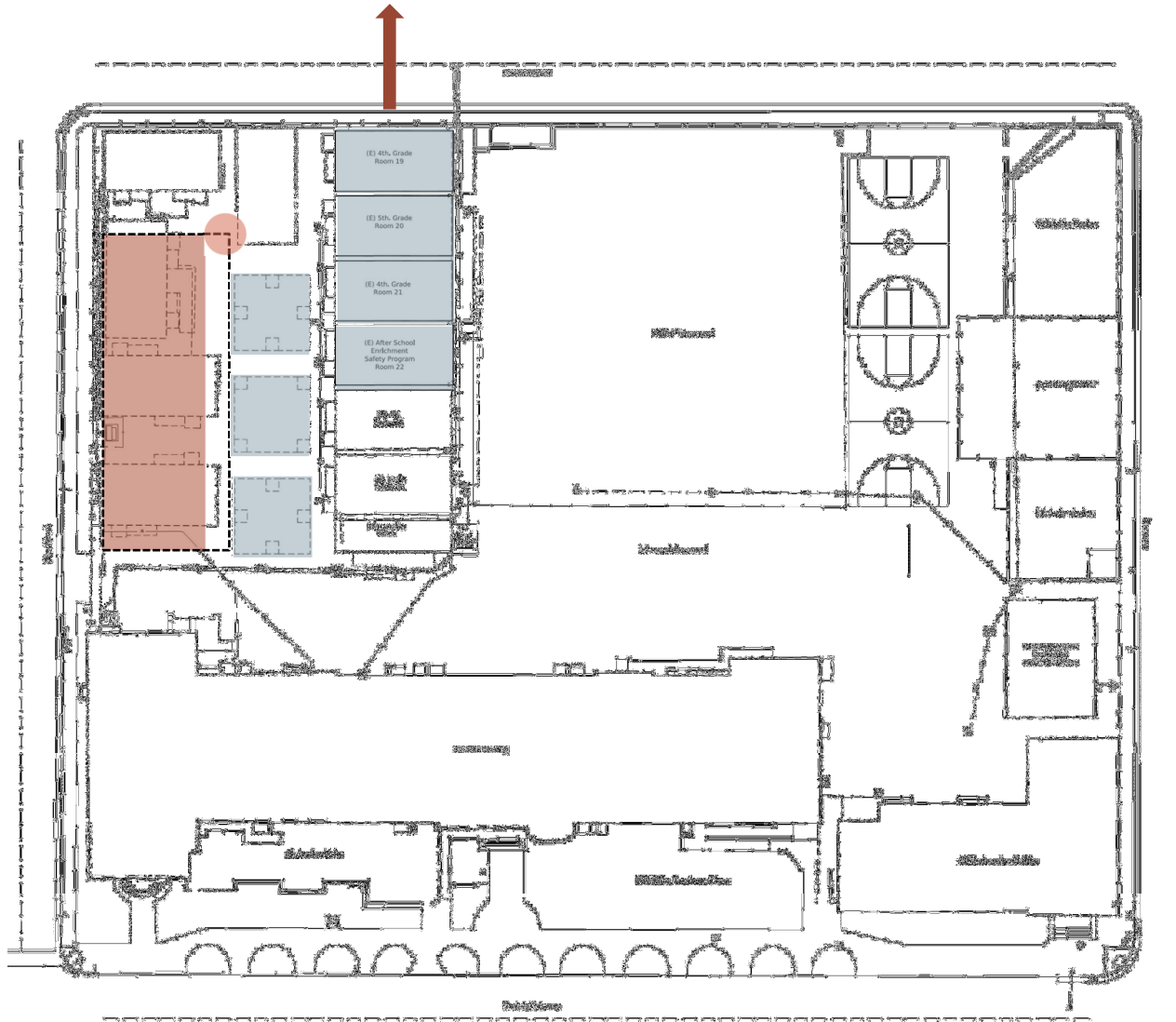
Phase 3 – Building Delivery

05 August 2020

collaboration | advocacy | research | education | sustainability

BARTOS
ARCHITECTURE

Principal Update: Gault Elementary School



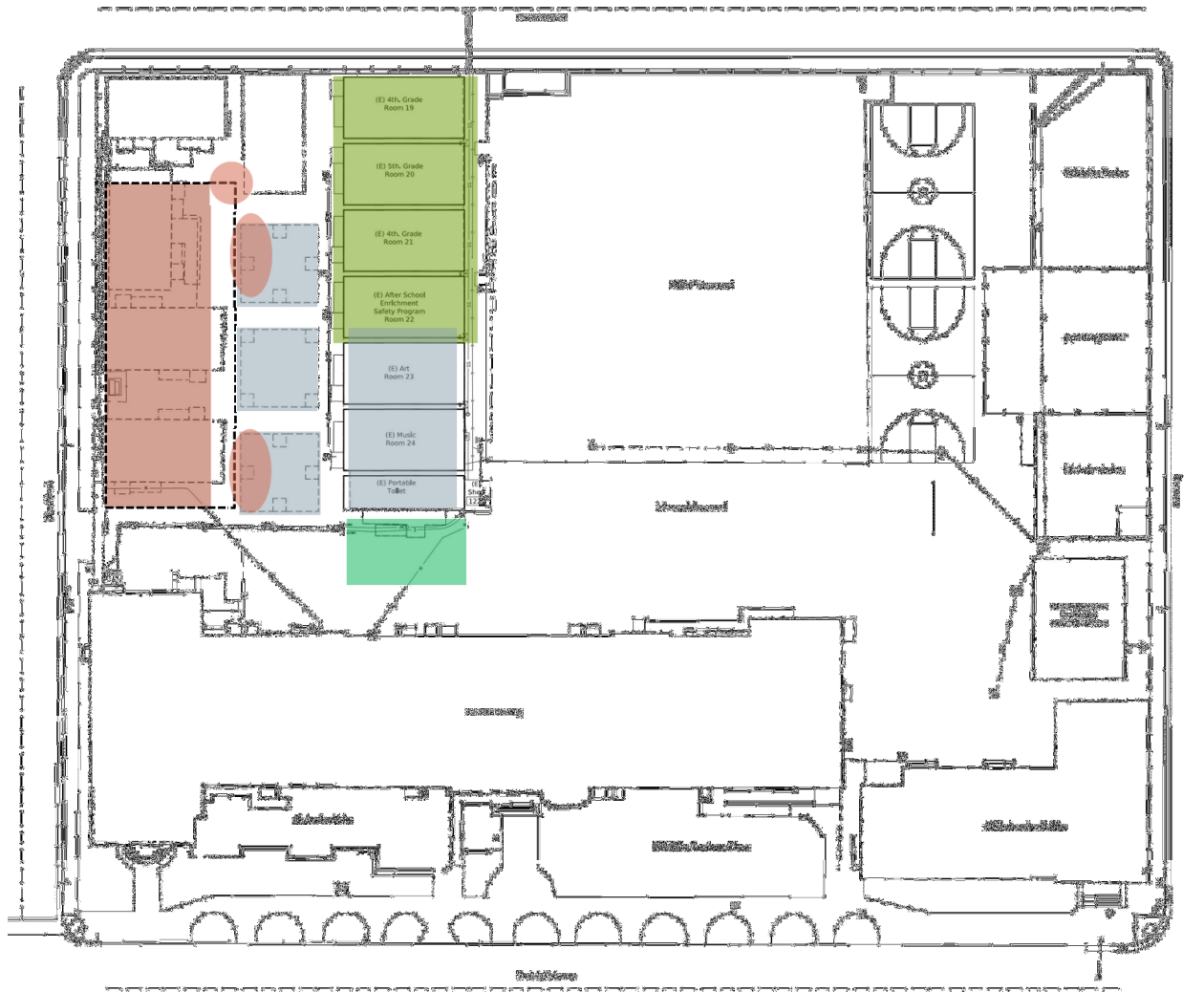
Phase 4 – Remove Portables

05 August 2020

collaboration | advocacy | research | education | sustainability

BARTOS
ARCHITECTURE

Principal Update: Gault Elementary School



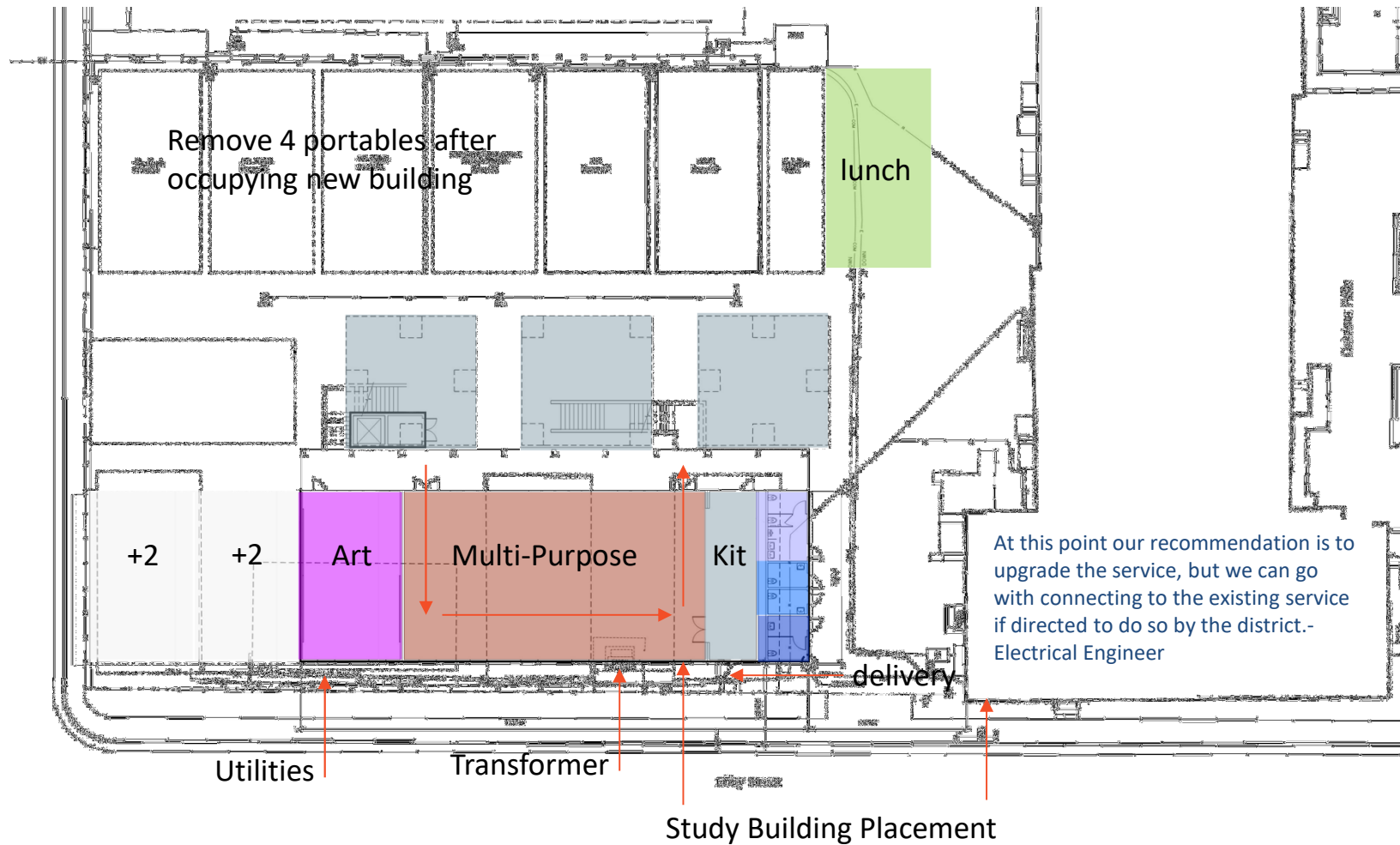
Phase 5 – Final Site work and lunch canopy

05 August 2020

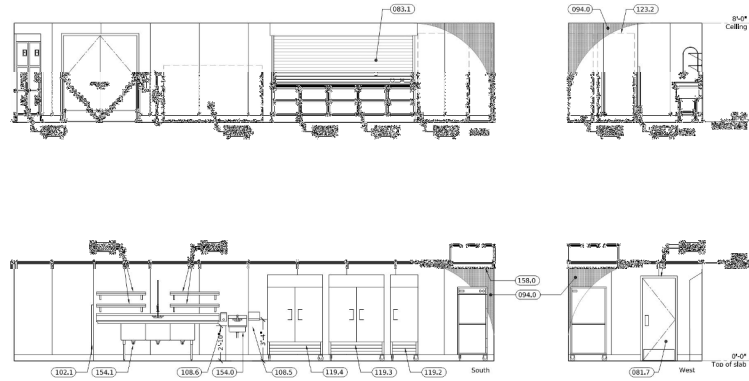
collaboration | advocacy | research | education | sustainability

BARTOS
ARCHITECTURE

Principal Update: Gault Elementary School



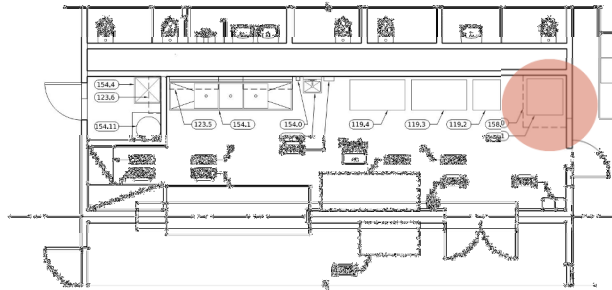
Principal Update: Gault Elementary School



Warming Kitchen Elevation

Item No.	Description	Manufacturer	Model	Qty	Ampt	Utl.	Phase
1	Overhead Sliding Door	Cornell Iron Works	Rolling Counter Doors	1	N/A	N/A	N/A
2	Refrigerator	CresCor	RD-111-FW-1332DX	1	N/A	208	three
3	Reach-in Refrigerator - double door	True	TS-49-HC	1	5.4	115	single
4	Reach-in Refrigerator - single door	True	TS-23-HC	1	2.2	115	single
5	Reach-in Freezer - double door	True	TS-49-HC	1	9.6	115	single
6	Reach-in Freezer	True	TMF-44-A-GH-47	1	7.7	114	single

Warming Kitchen Floorplan



Sheet Notes

- All dimensions given take precedence over scale. Contractor shall not scale drawing to determine dimensions without consulting the architect. Contractor shall review all dimensions for accuracy prior to construction. All written dimensions supersede scaled dimensions. All dimensions are to face of substructure unless otherwise noted.
- Dimensions shown as "C.C.P." are to face of slab. All other dimensions are to face of substructure unless otherwise noted.
- Baseline dimensions taken from face of building.
- Refer to Irrigation plan for requirements of sloving under paving.
- All proposed features shall be stated in detail by California Licensed land surveyor for review by the district's representative prior to construction.
- Install expansion joints as shown on drawings, as well as between concrete flatwork and walls, curbs, and existing flatwork or structures.
- Contractor will prepare expansion and control joint layout shop drawings for review and approval by the architect.

Keynotes

Keynotes are arranged by CSI section. Refer Specifications for additional information.

- Openings
Refer Opening Schedule, A1.0
- IM Frame
- HIP Door
- Roll-up Door

- Finishes
092.1 Gypsum Board (5/8" Type X)
- POP Panels
- Interspersed Ceiling
- Epoxy Cove Base
- Stainless Steel
- Paint

- Mechanical / Plumbing
Refer Mechanical, Plumbing Drawings
- 3 compartment sink
- Floor sink
- Floor drain
- Handwashing

- Stainless steel wall mounted shelf 60"x12"
- Stainless steel wall mounted shelf 36"x12"

BARTOS ARCHITECTURE

1730 S. AMPHLETT BLVD, SUITE 225
SAN MATEO, CALIFORNIA 94402



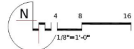
Santa Cruz City Schools
405 Old San Jose Rd.
San Jose, CA 95073



Gault Elementary School
1320 Scabright Avenue
Santa Cruz, CA 95062



Warming Kitchen
Elementary School

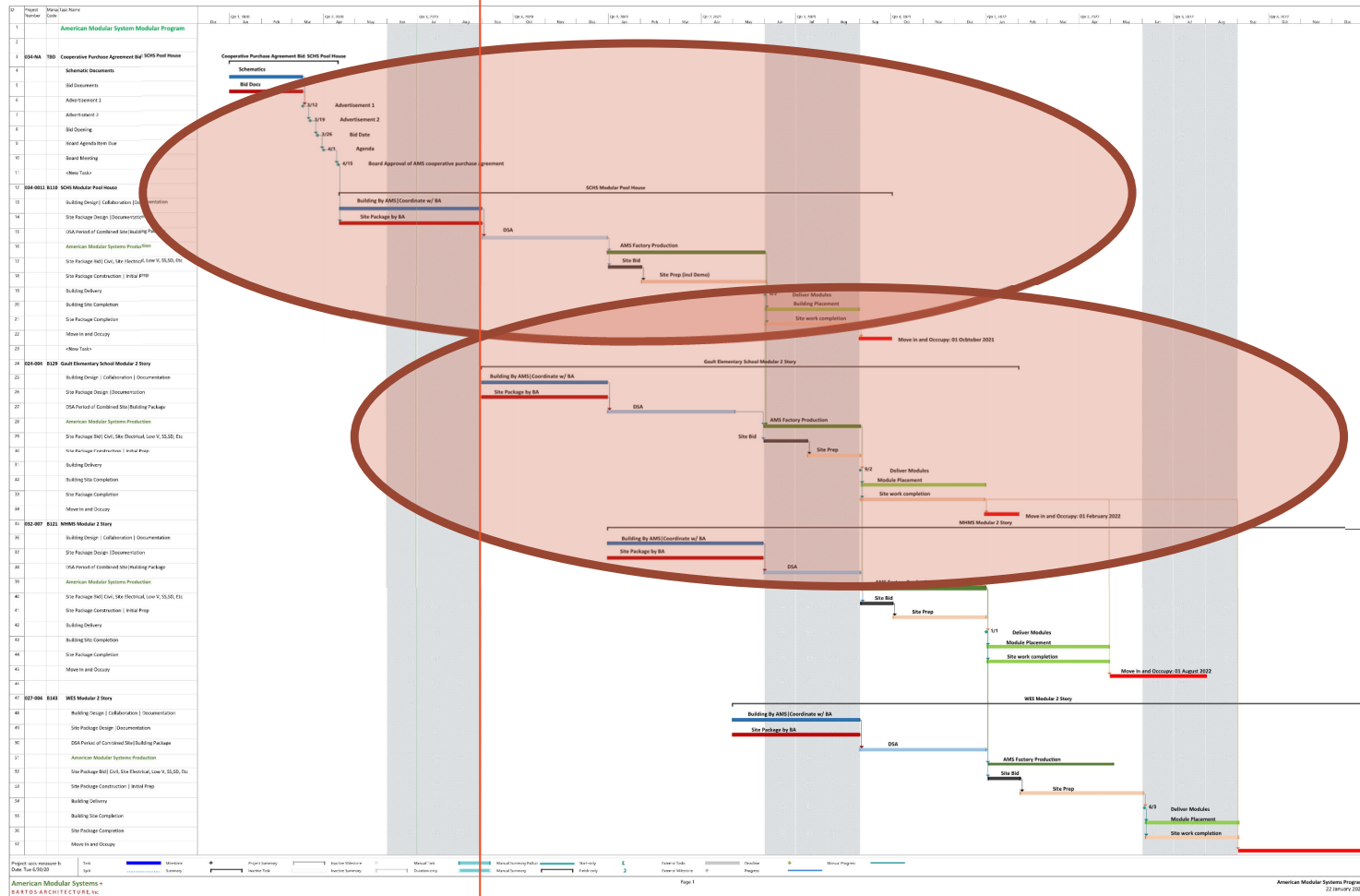


Warming kitchen
Floor Plans and
Interior Elevations

A2.0

08.17.2023

Principal Update: Gault Elementary School



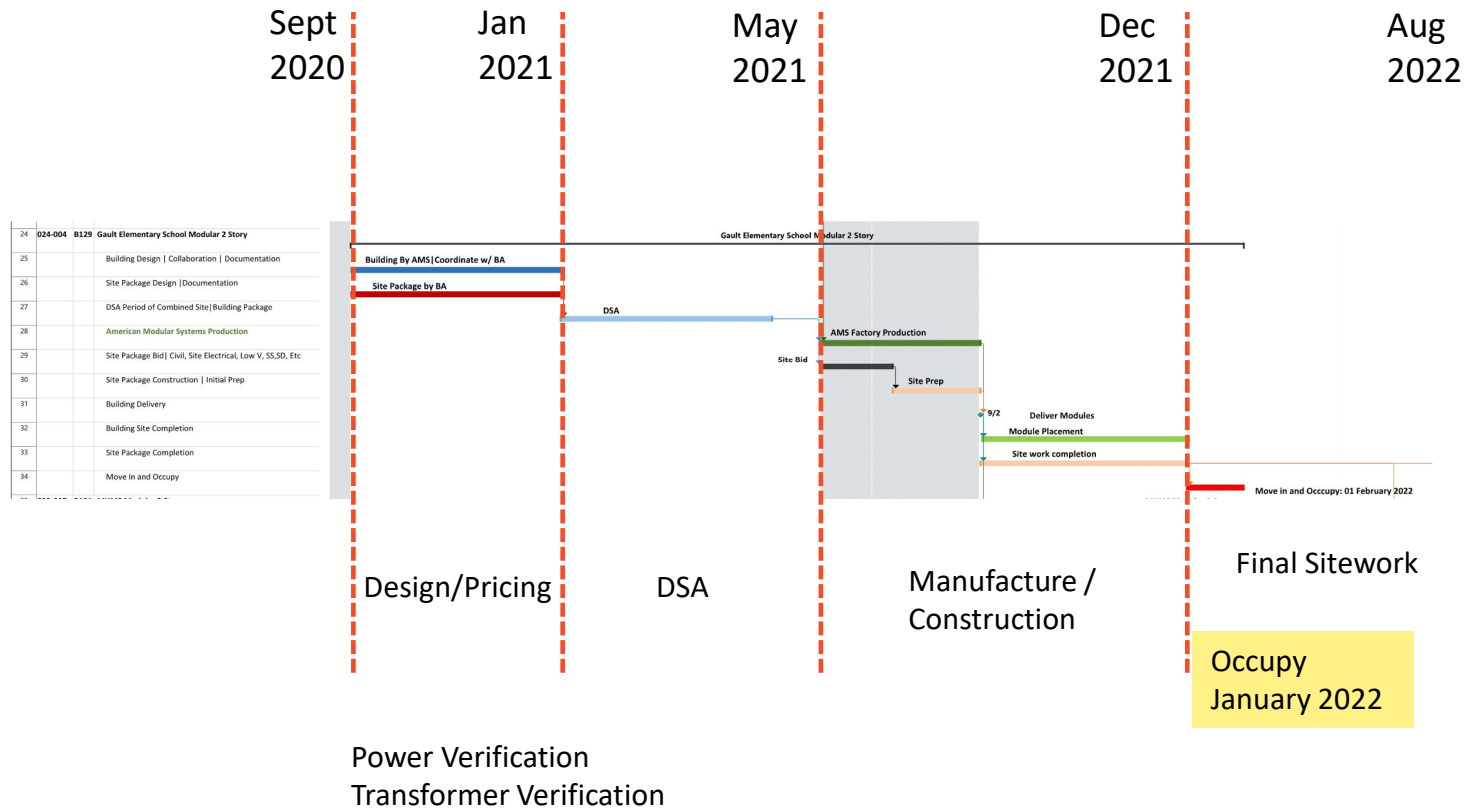
Phase 5 – Final Site work and lunch canopy

05 August 2020

collaboration | advocacy | research | education | sustainability



Principal Update: Gault Elementary School



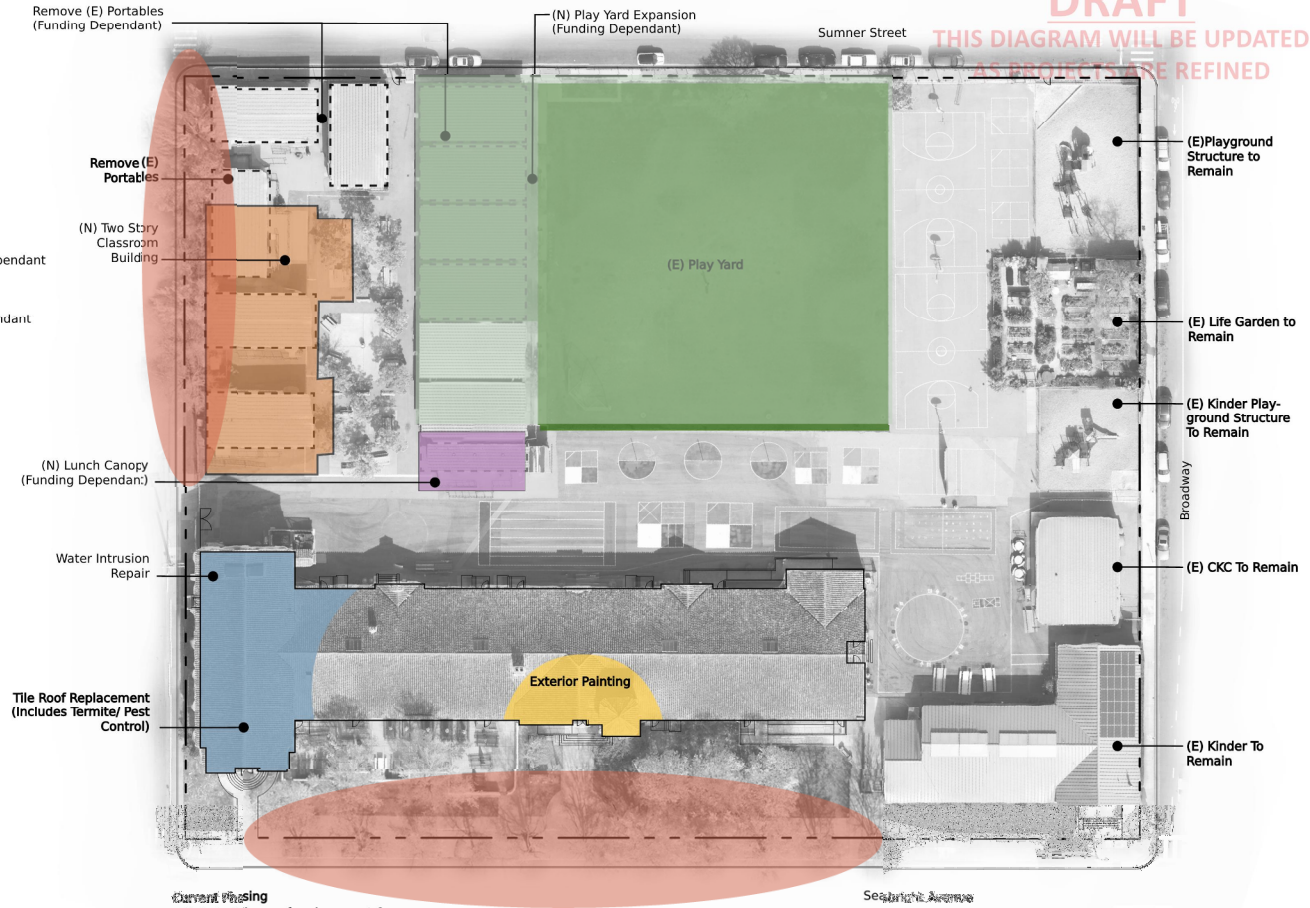
Overall Schedule

Principal Update: Gault Elementary School

Anticipated Construction schedule

Anticipated Construction schedule	Projects
Completed	Miscellaneous Projects
Completed	Water Intrusion repair
Completed	Tile Roof Replacement
Completed	Exterior Painting
On Going	Data Infrastructure
On Going	Card Access Security System
Summer 2021	Remove Portables (Phase 1)
Winter 2021	New Classroom Building
Summer 2022	Remove Portables (Phase 2) - Funding Dependant
Summer 2022	Lunch Canopy - Funding Dependant
Summer 2022	Play yard Reconfiguration - Funding Dependant

	Master Plan Project Categories
Future	Building Modernization
Future	HVAC System Improvement
Complete	Utility Infrastructure
Complete	Exterior Painting
Complete	Re-Roofing
Future	Landscape and Irrigation
	Portable Replacement/ New Construction
	Kitchen Relocation
	Shade Canopy Additions
Complete	Student Drop-off and Parking Areas



DRAFT
THIS DIAGRAM WILL BE UPDATED
AS PROJECTS ARE REFINED

Current Phasing
 • Main building roof replacement & other miscellaneous improvements
 • New classroom building

Gault Elementary School
Santa Cruz City Schools



Principal Update: Gault Elementary School



Measure Projects

YOUR BOND DOLLARS AT WORK



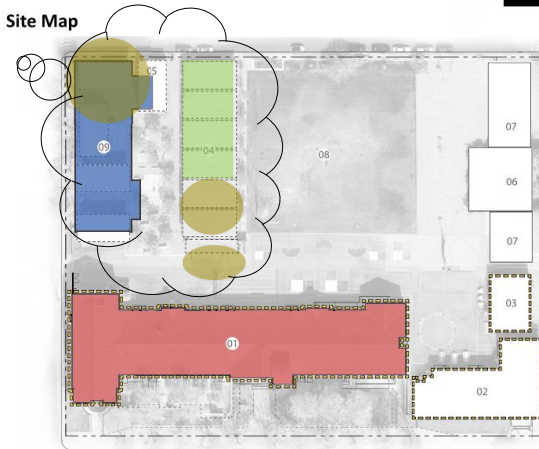
Projects

- Modernization: Roofing
- Exterior Painting
- Card Access
- Data Infrastructure
- New Classroom Building
- Utility Infrastructure

Status

- Completed
- Construction Summer 2019
- Design
- Design
- Planning
- Planning

Site Map



- 01 Main Building
- 02 Kindergarten Building
- 03 Portable Classrooms
- 04 Portable Classrooms
- 05 Portable Classrooms
- 06 Garden
- 07 Play Ground
- 08 Play Fields
- 09 New Classroom Building

Completed Construction Design Planning



GAULT ELEMENTARY SCHOOL

SANTA CRUZ CITY SCHOOLS THANKS YOU FOR YOUR SUPPORT!



www.sccs.net

Bond Committee Update: Gault Elementary School

END

05 August 2020

collaboration | advocacy | research | education | sustainability

BARTOS
ARCHITECTURE