

# Santa Cruz HS |Principal Update

SANTA CRUZ CITY SCHOOLS | PRINCIPAL UPDATE- 05 AUGUST 2020

**BARTOS**  
ARCHITECTURE

COLLABORATION  
ADVOCACY  
RESEARCH  
EDUCATION

## Site Project Update

- ✓ Replaced Drinking Water Piping
- ✓ Re-roofed most of campus
- ✓ Waterproofing of Ground Floor Main Building
- ✓ Water Bottle Fillers Added to campus
- ✓ Gymnasium Upgrades Paint, Floors, Padding, (Dividers, AV coming soon)
- ✓ Gym HVAC under construction
- ✓ Relocated Art to Unit G. Improved room 83
- ✓ Reconfigured Admin Offices for better security
- ✓ Gym HVAC: Construction
- ✓ Unit G,H, Library Roofing: Construction
- ✓ Site Security: Fencing Complete
- Home Ec Conversion and Cafeteria Improvements: Bidding October
- Campus Power Upgrades: Bidding October
- Main Building Ground Floor (basement): DSA Approved
- Pool House: Design: DSA pre-application August 03
- Gym Lobby: Design: DSA pre-application August 17

# Measure A | B Update: Santa Cruz High School



Gymnasium Floor  
Paint, Pads, Acoustics | Next: Dividers





# Measure A | B Update: Santa Cruz High School



## Gymnasium Dividers: Next Projection Screen

05 August 2020

collaboration | advocacy | research | education | sustainability

**BARTOS**  
ARCHITECTURE



# Measure A | B Update: Santa Cruz High School



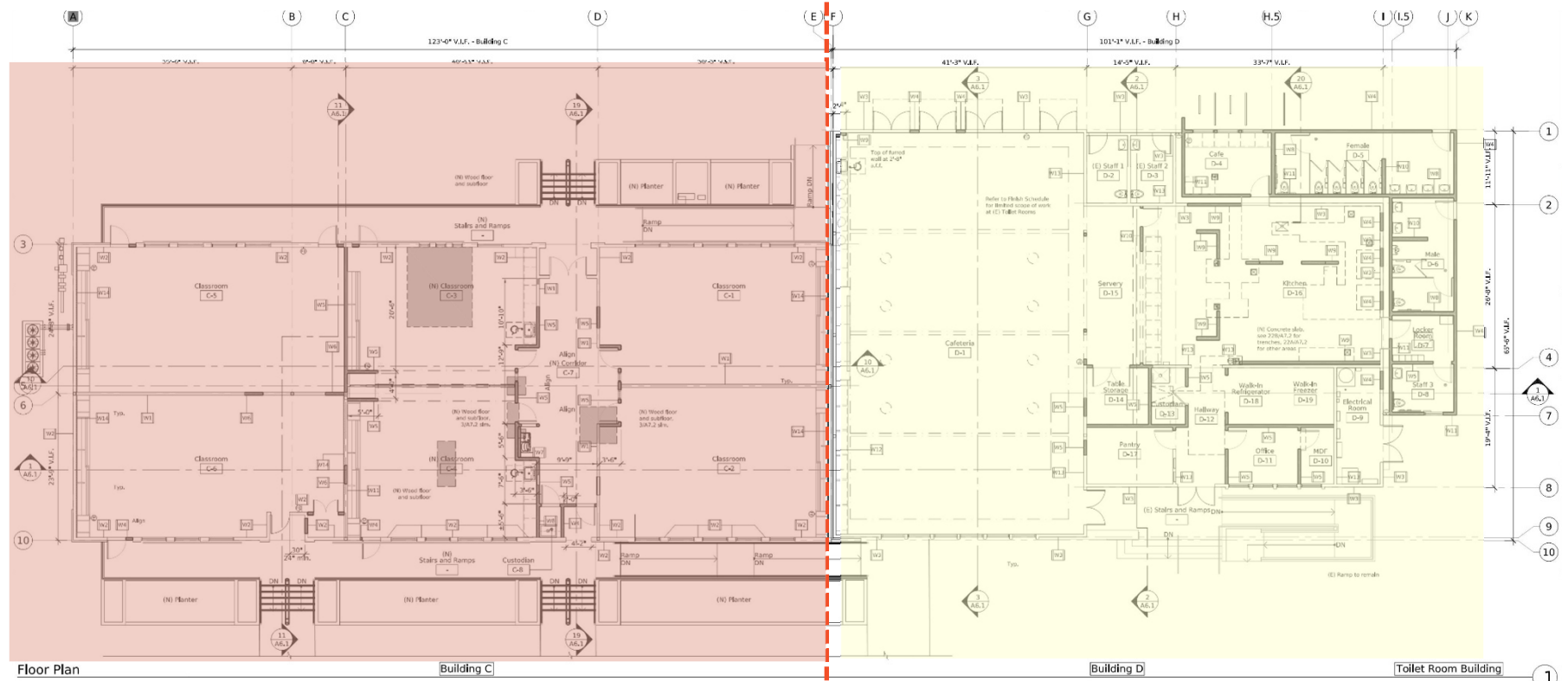
## Site Security: Fencing on Laurel

05 August 2020

collaboration | advocacy | research | education | sustainability

**BARTOS**  
ARCHITECTURE

# Unit C/D Potential Phasing



Single Phase per current plan  
15 Months

Sept. 2020 – **December 2021**

*Note: with entire building this may go faster*

Phased Option: *Normalized by January 2021*  
15 Months

Unit C: Spring – Fall (ph 2)  
Jan 2021 – **December 2021**

Unit D: Fall Semester 2020 (ph 1)  
September 2020 – June 2021 +/-

*Open Cafeteria sept 2021?*

Phased Option: *Normalized by Fall 2021*  
15 Months

Unit C: Summer - Fall  
June 2021 – June 2022 (Sept)

Unit D: Spring Semester 2021 (ph 1)  
Jan 2021 – Sept 2021 +/-

*This option  
selected 6/24/20*

Single Phase: *Normalized by June 2021*  
15 Months

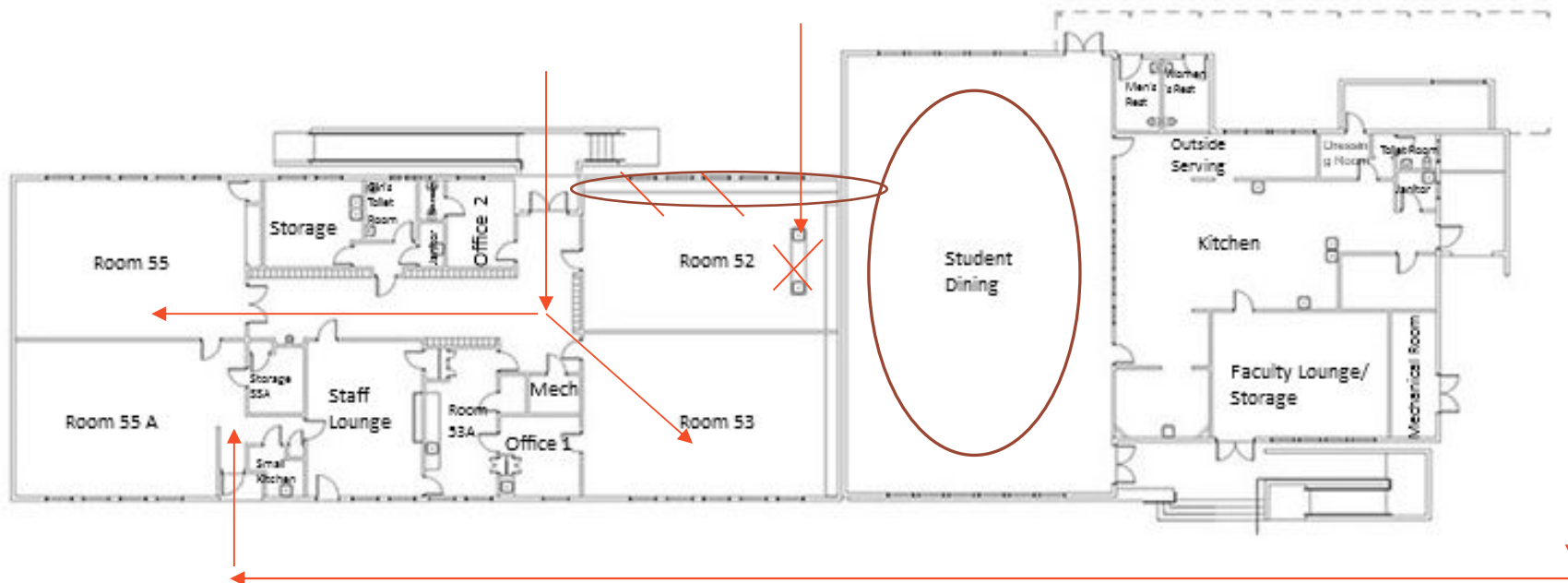
June 2021 – **Start of fall 2022**

## Unit C/D Potential Phasing

Existing Building Layout

*Per Michelle: Remove cab below windows and science table.*

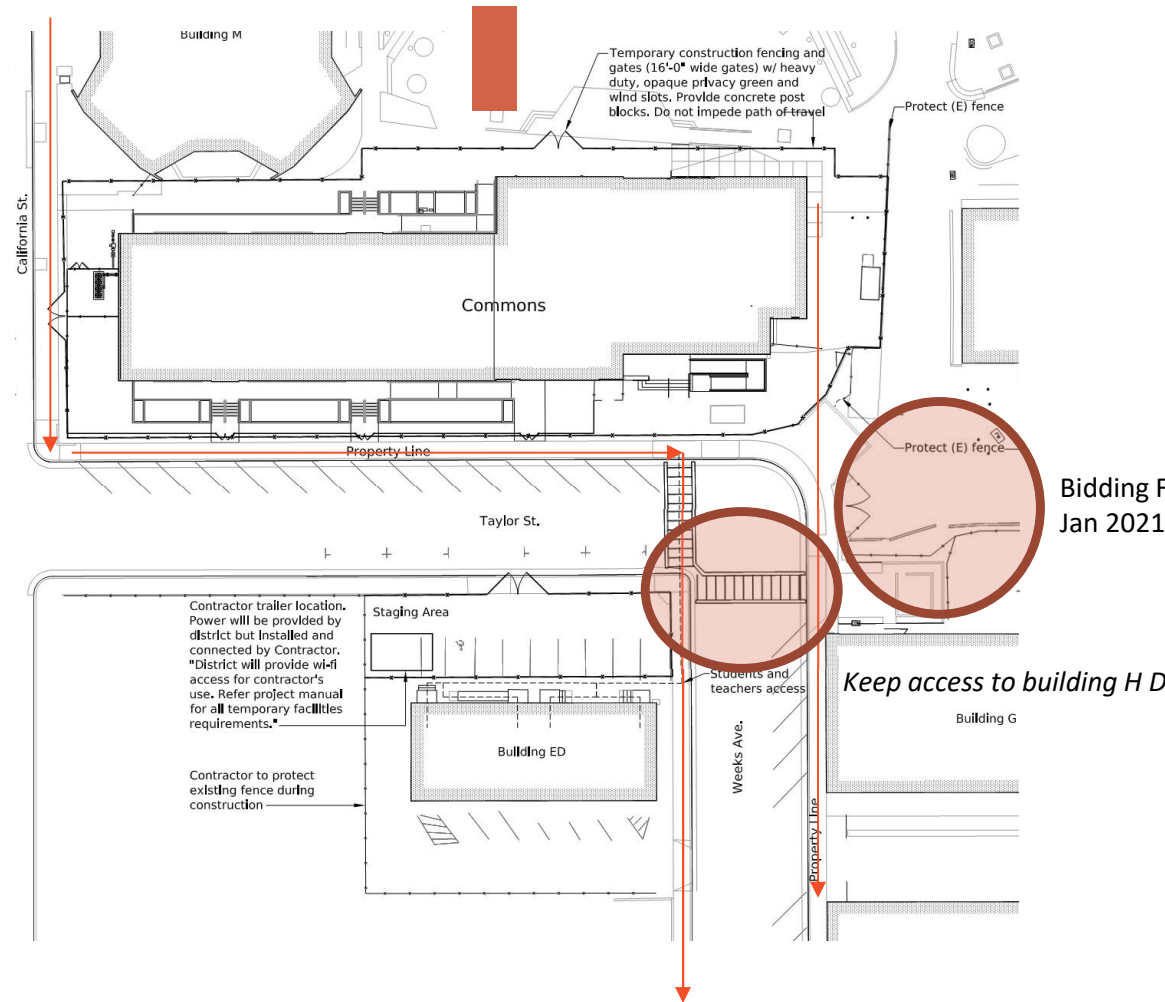
*Per TM: Patch floor: includes gas, sewer, water, electrical*



*No assistance needed for temporary room layout*



# Unit C/D Potential Phasing



Bidding Fall  
Jan 2021 through Summer 2021

END

# Pool Improvements

