

Westlake ES | Bond Committee Meeting

SANTA CRUZ CITY SCHOOLS | 29 JANUARY 2020



BARTOS
ARCHITECTURE

COLLABORATION
ADVOCACY
RESEARCH
EDUCATION

Measure B Update: Westlake Elementary School

Past

- ✓ Marquee Sign, Complete
- ✓ Campus Re-roofing, Complete
- ✓ Upper Accessible Lift, Complete

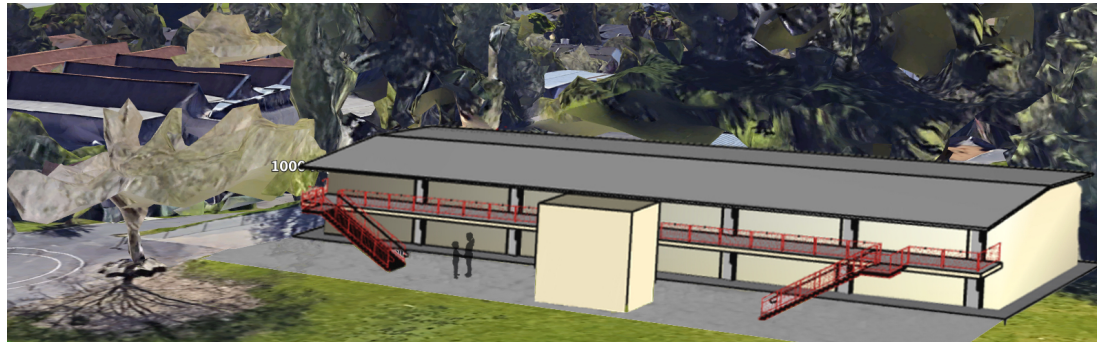
Ongoing

- Site Security Access Cards
- Classroom Technology
- Site Security, Fencing
- Sewer Utilities: Assessment underway
- Playground Play Equipment, Being Selected

Future

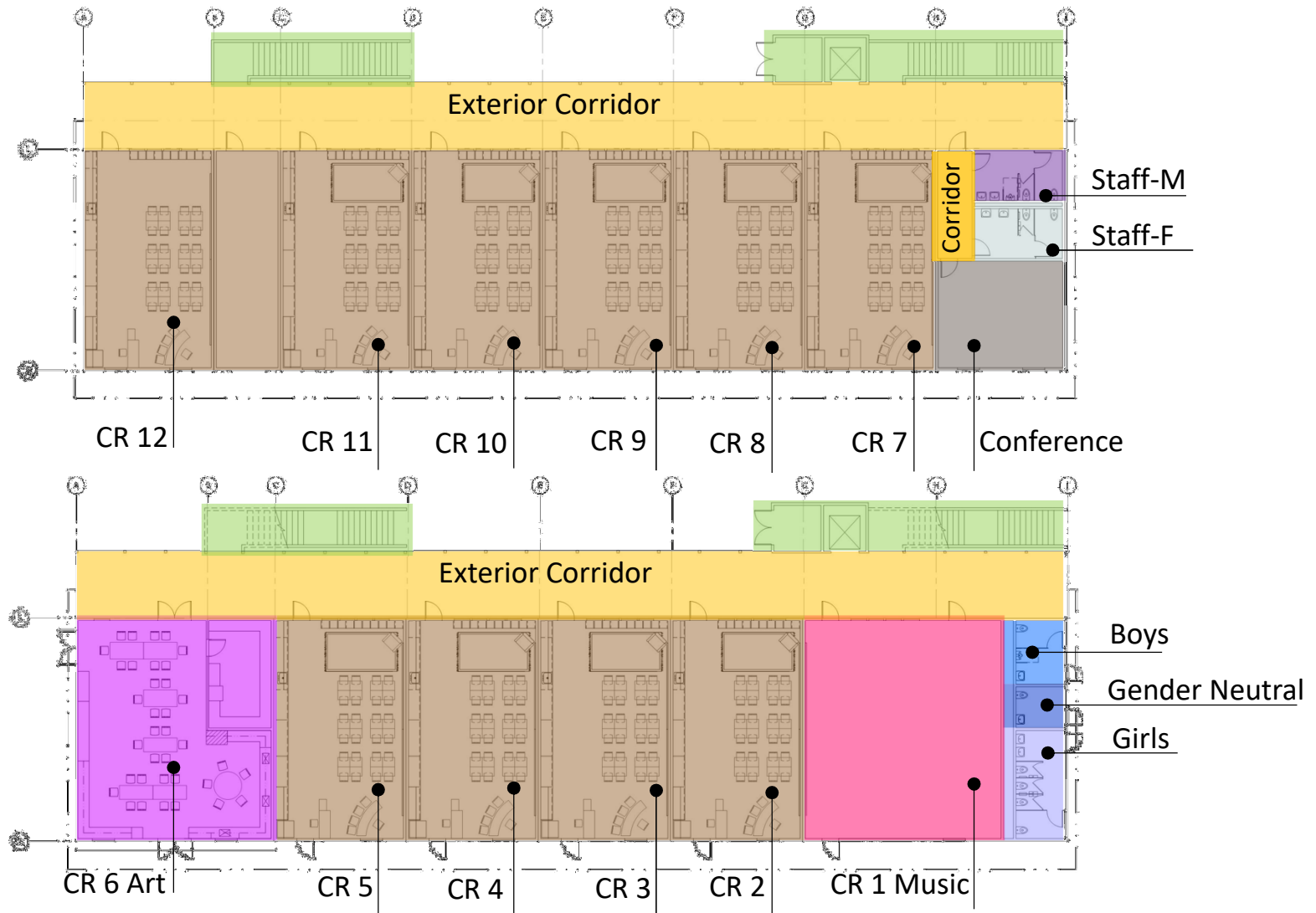
- Classroom Furniture
- Relocation / site preparation for New Building
- New Two-Story Modular Classroom Building

Measure B Update: Westlake Elementary School



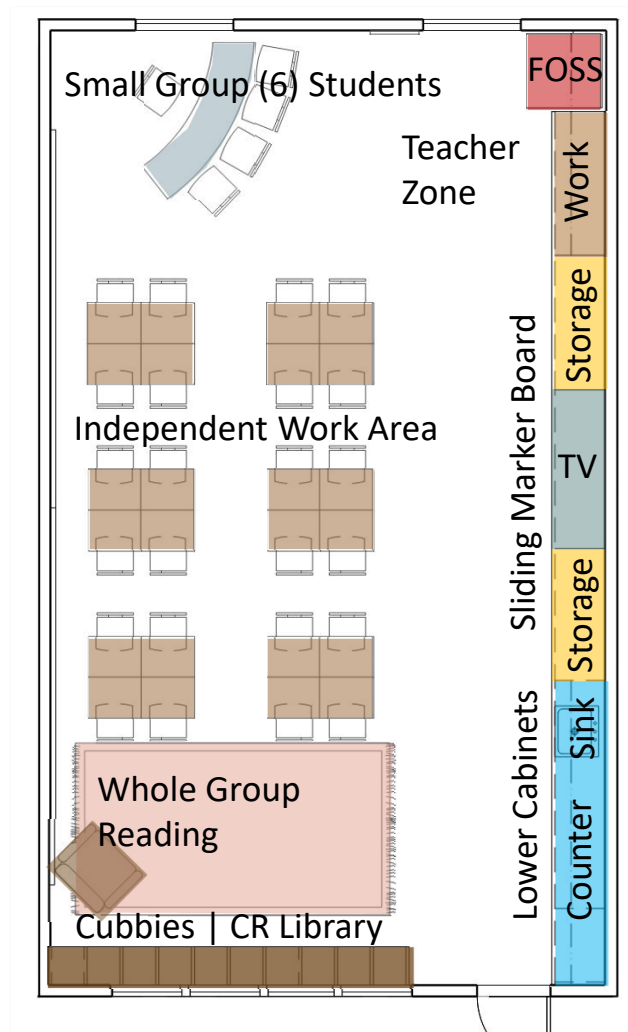
Proposed New Modular Building

Measure B Update: Westlake Elementary School



Proposed New Modular Building

Bond Committee Update: Westlake Elementary School

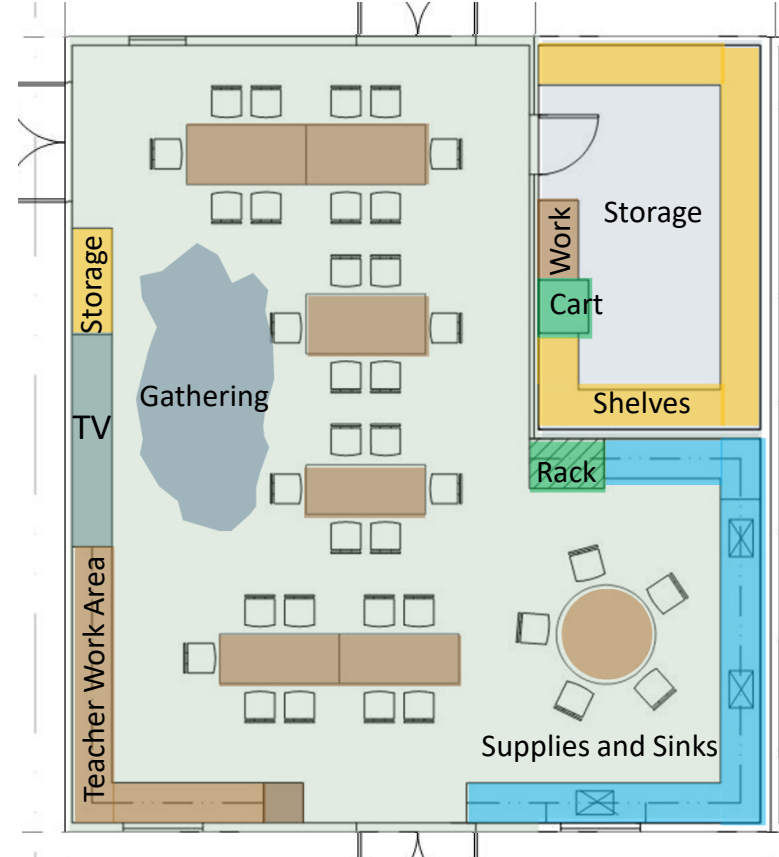
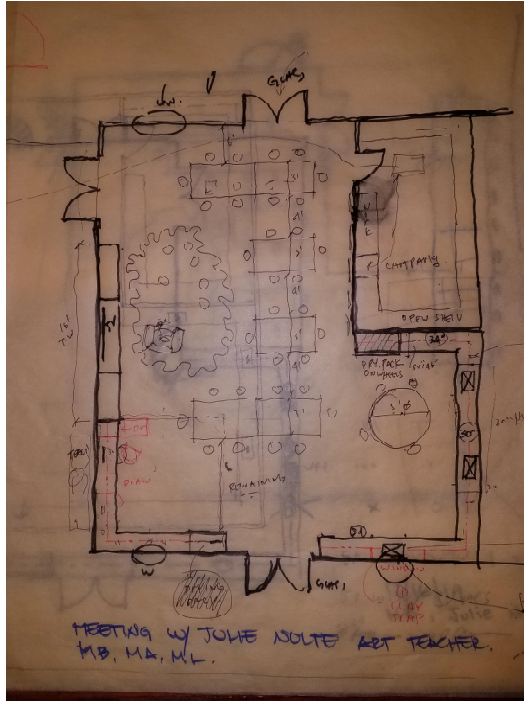


Work area arrangement varies with grade/teacher

Chrome Carts

Potential New Modular Building Classroom: Collaboration Needed

Bond Committee Update: Westlake Elementary School



Proposed New Modular Building Art Classroom

Bond Committee Update: Westlake Elementary School

Project	Allocation	Status
Multi Project Overhead	\$688,472	Ongoing
New Classroom Building	\$6,160,753	Summer 2019
Remove Upper Portables	\$41,427	Summer 2021
Site Improvements	\$466,054	Ongoing
Mod Phase 1 Upper	\$500,000	After New Building
Mod Phase 2 Lower	\$500,000	After New Building
Mod Phase 3 (Admin)	\$500,000	(Painting Project)
Lower Parking	\$1,000,000	After New Building
Re-Roof	\$2,279,788	Complete
Playfields	\$828,541	Initiated Design
Card Access Security System	\$139,253	Ongoing
Data Infrastructure	\$335,000	Ongoing
Furniture	TBD	TBD
<i>Budget allocation-ROM only.</i>	\$13,439,288	
<i>Measure B Resource</i>	\$13,439,288	