

# Westlake ES | Bond Committee Meeting

SANTA CRUZ CITY SCHOOLS | 21 FEBRUARY 2019



# Measure A | B Update: Westlake Elementary School

First Floor: At existing portables

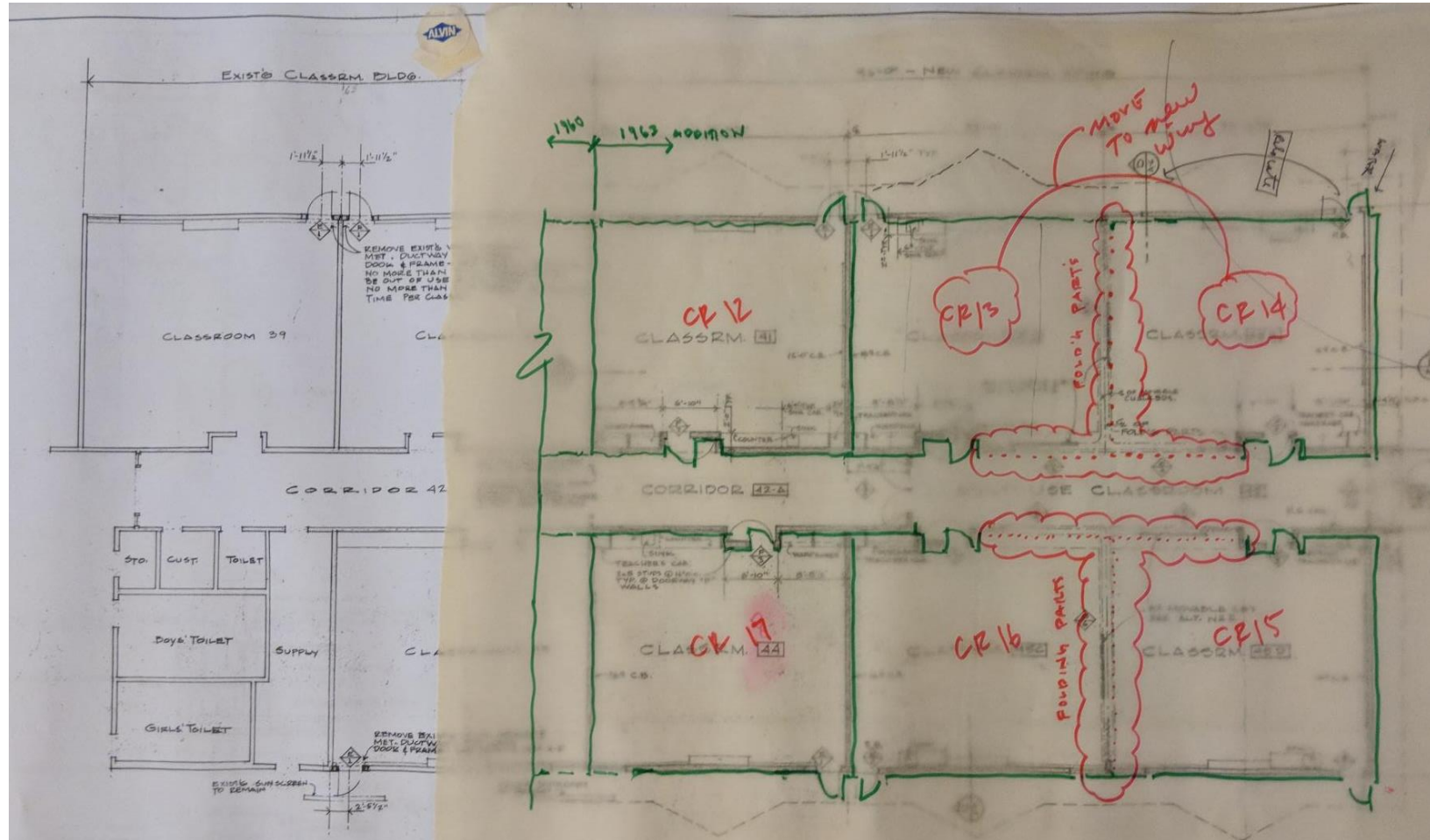


# Measure A | B Update: Westlake Elementary School



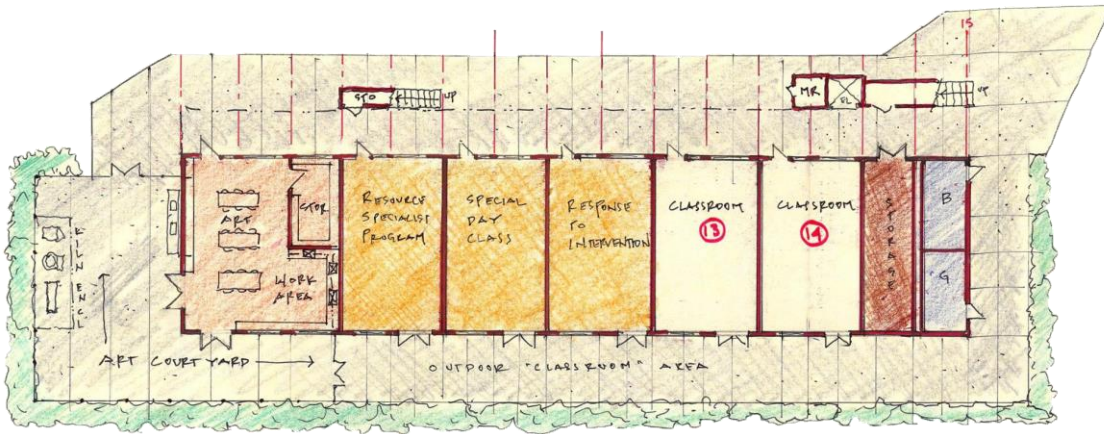


# Measure A | B Update: Westlake Elementary School

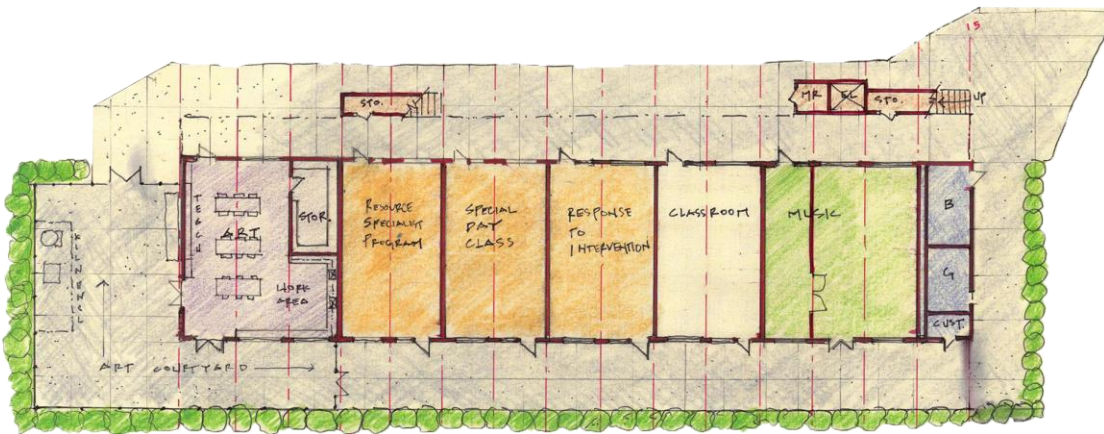


Potential music or other large/multi use space

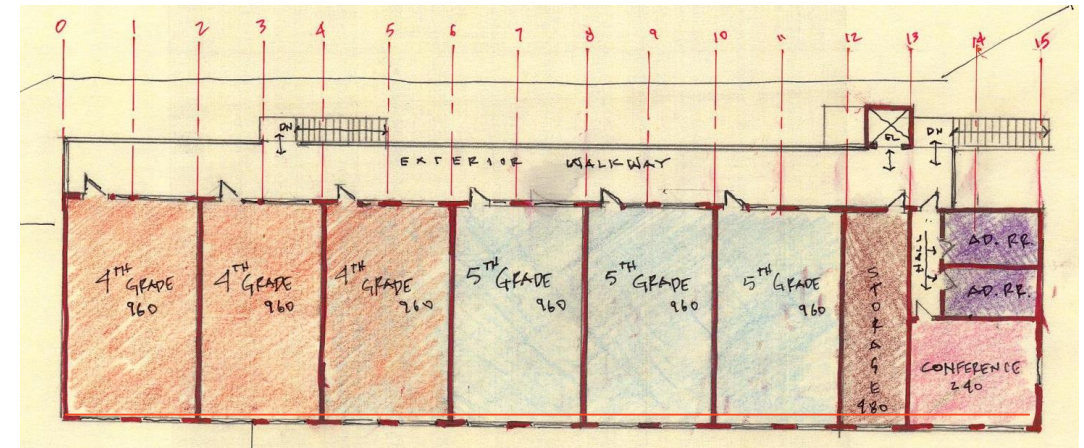
# Measure A | B Update: Westlake Elementary School



Lower Floor without Music - selected



Lower Floor with Music



Upper Floor

*Note: Final number of classrooms and configuration to be finalized in consultation with principal and district leadership. Based upon demographics and classroom use and need.*



# Measure A | B Update: Westlake Elementary School

View indicating selected location of 2 story building



# Measure A | B Update: Westlake Elementary School

Project	Allocation	Completion
Multi Project Overhead	\$696,000	
Card Access Security System	\$120,000	Summer 2019
Data Infrastructure	\$335,000	Summer 2019
Campus Re-Roofing	\$1,000,000	Summer 2019
Accessibility/Safety	\$300,000	Summer 2019
Playgrounds	\$750,000	Summer 2020
Classroom Building	\$6,114,000	Winter 2020
Lower Parking	\$750,000	Summer 2021
Remove portables	\$100,000	TBD
Modernize Upper Classrooms	\$1,500,000	2022
Modernize Lower Classrooms	\$1,500,000	2023
<i>Budget allocation-ROM only.</i>	\$13,165,000	

**E N D**